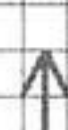
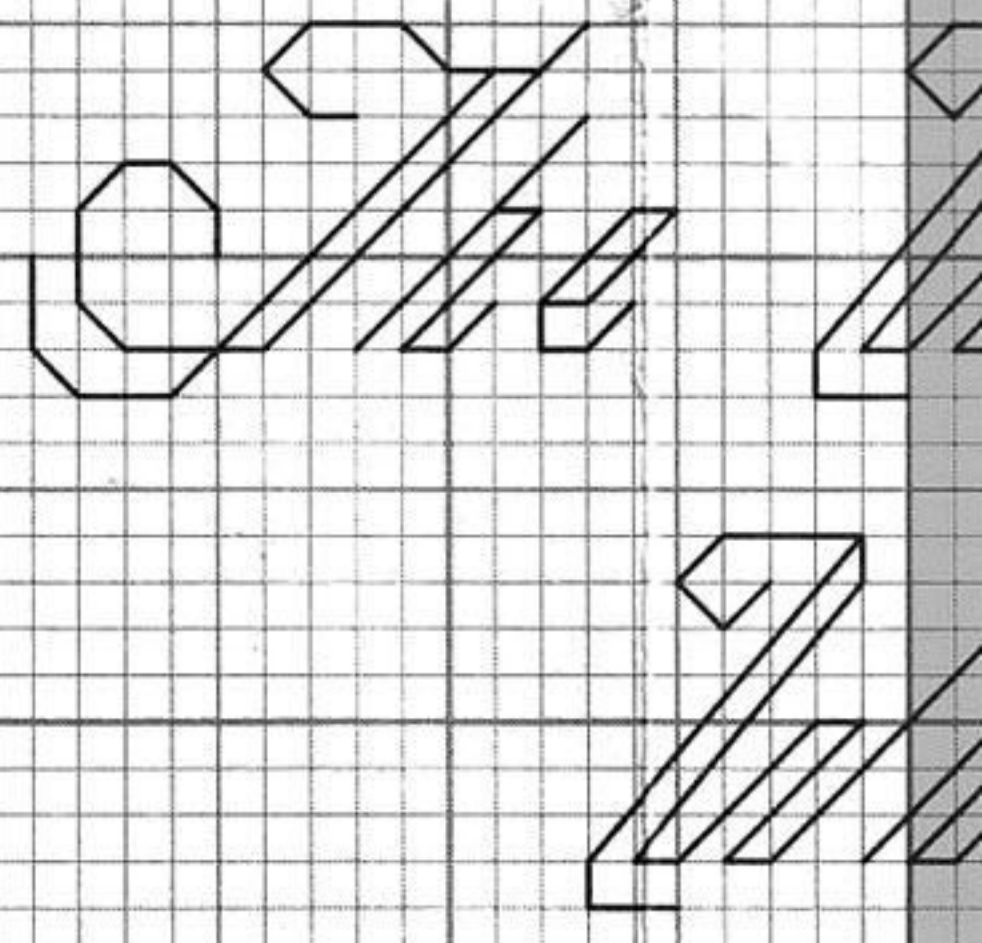
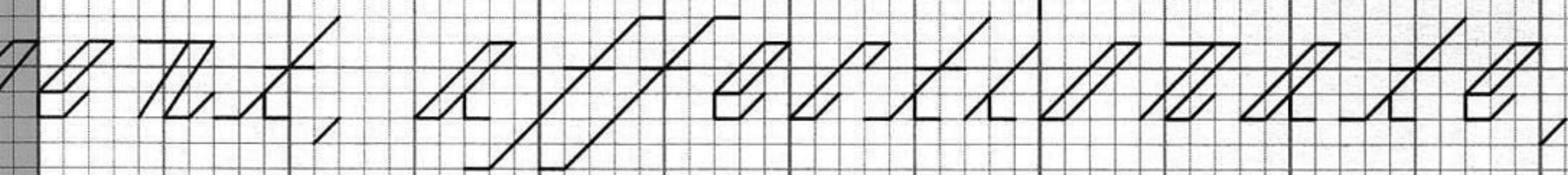
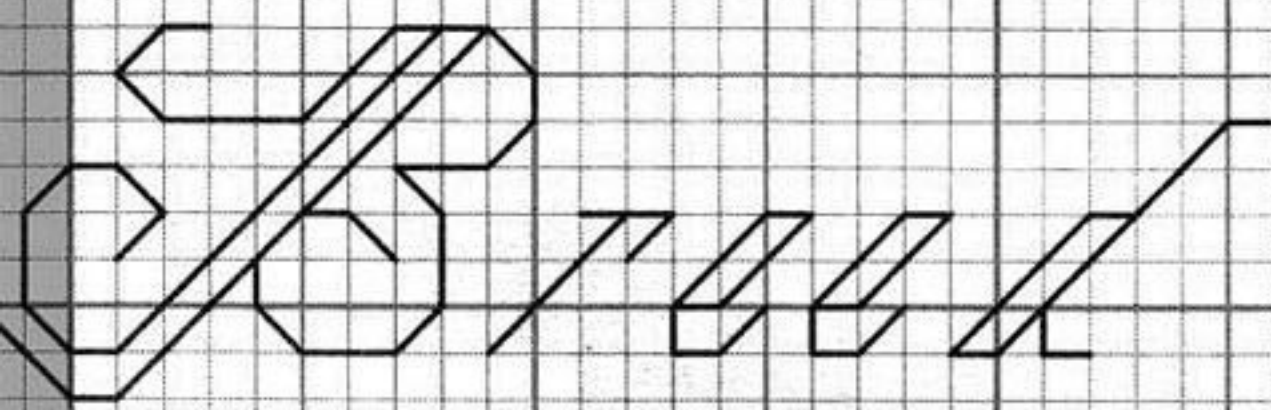
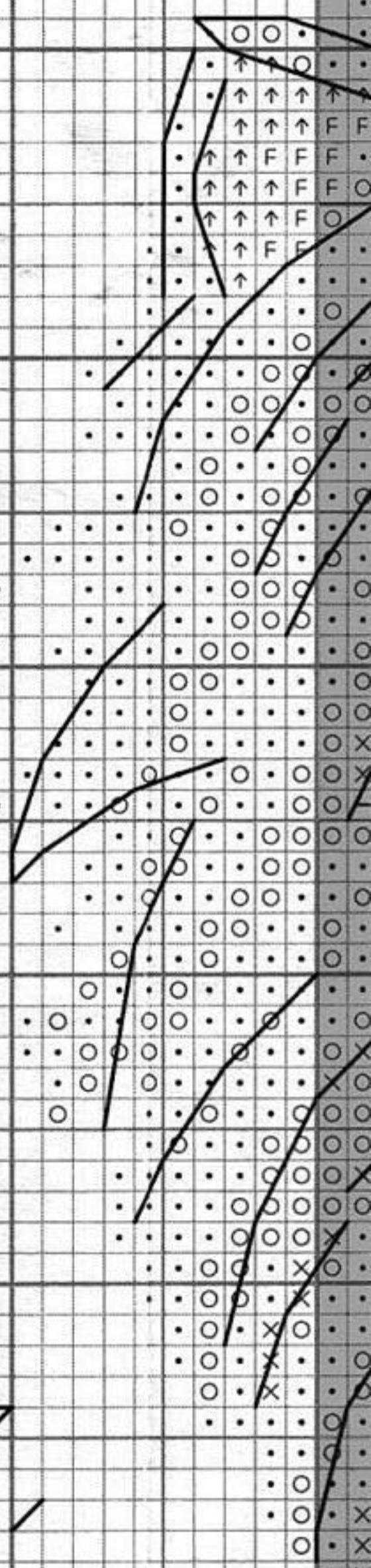
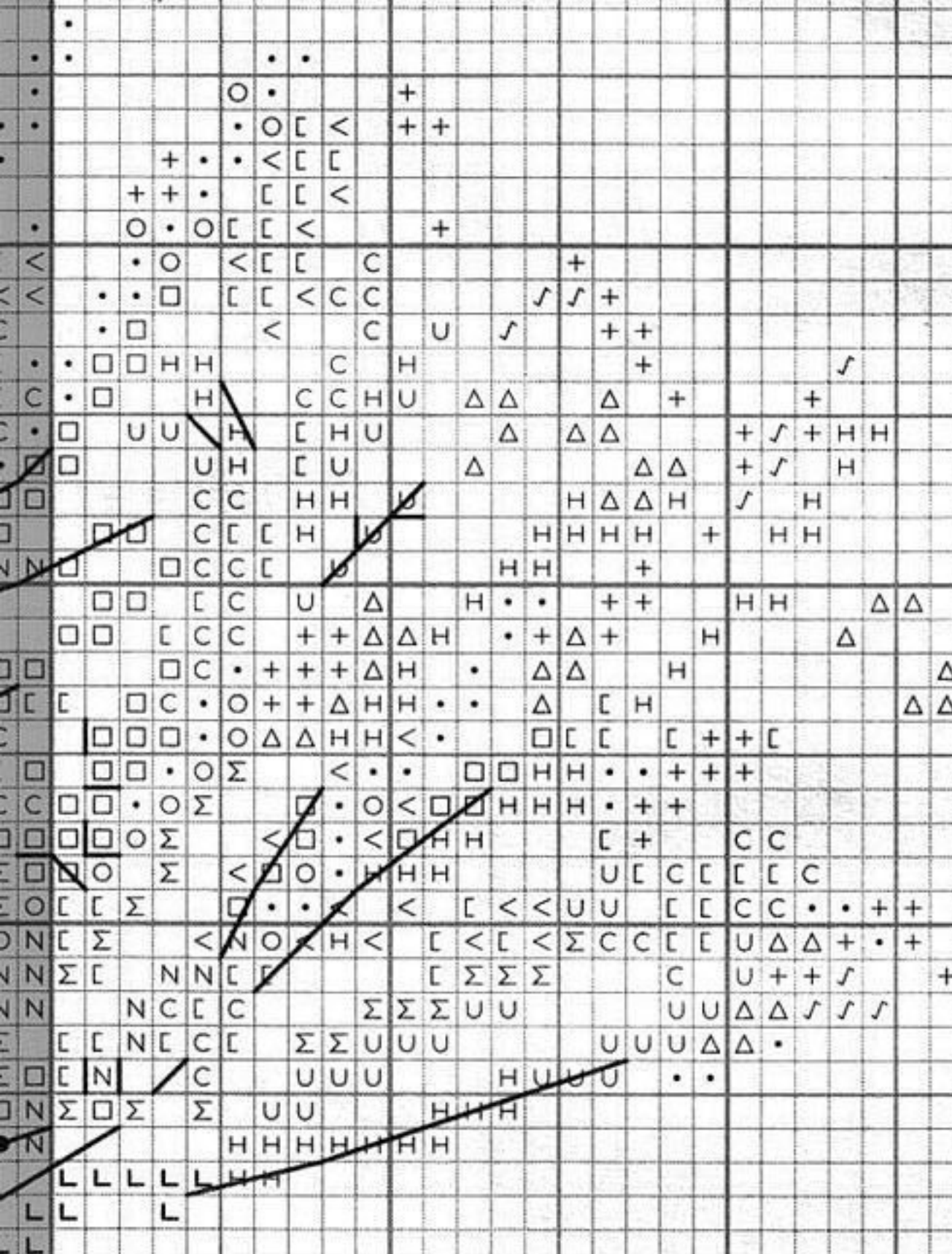
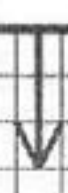
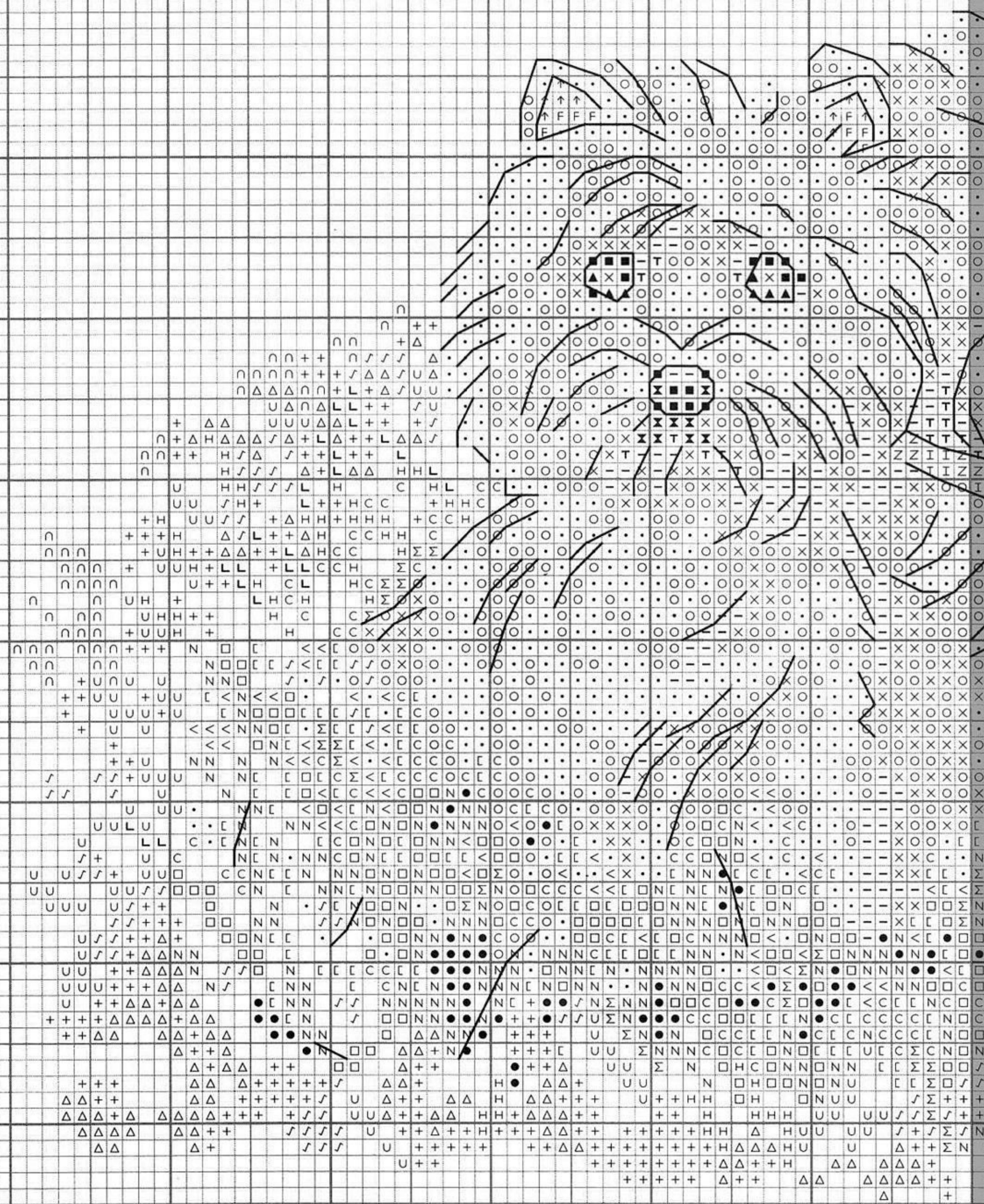
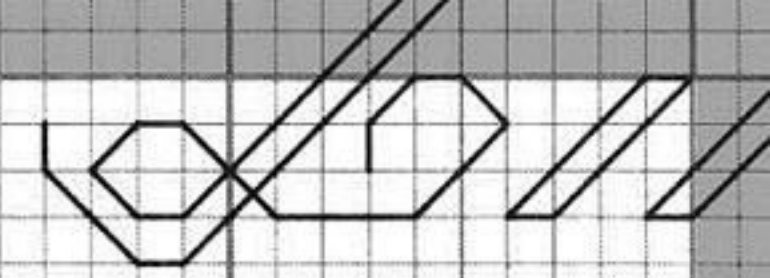
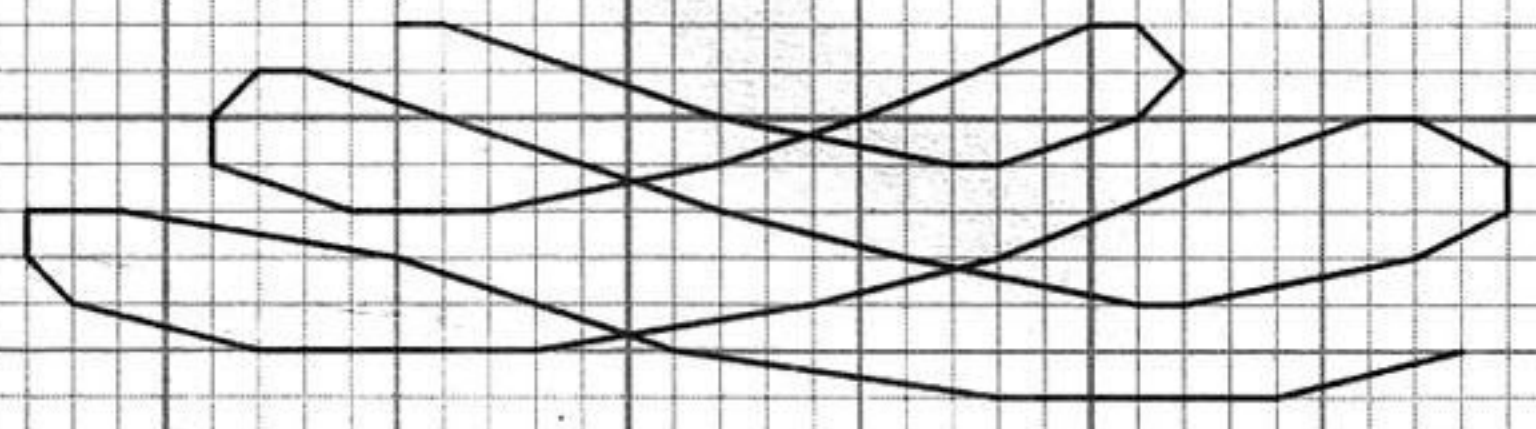
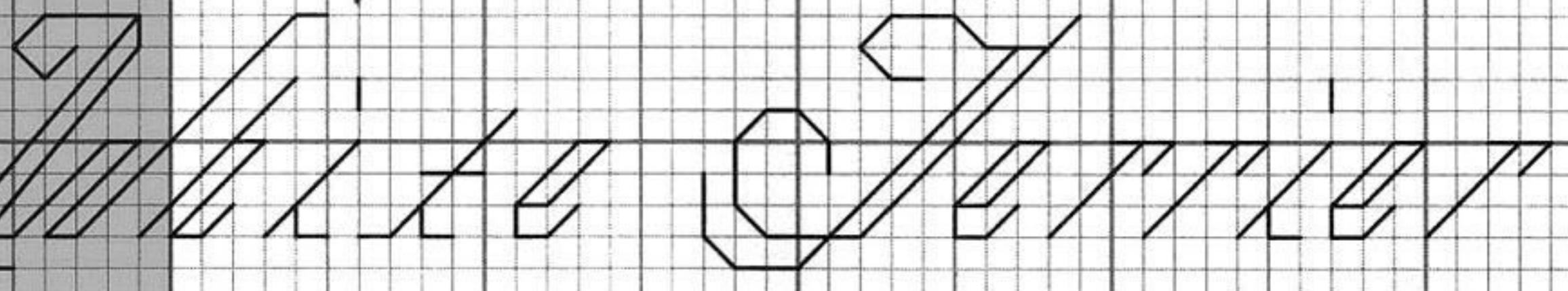
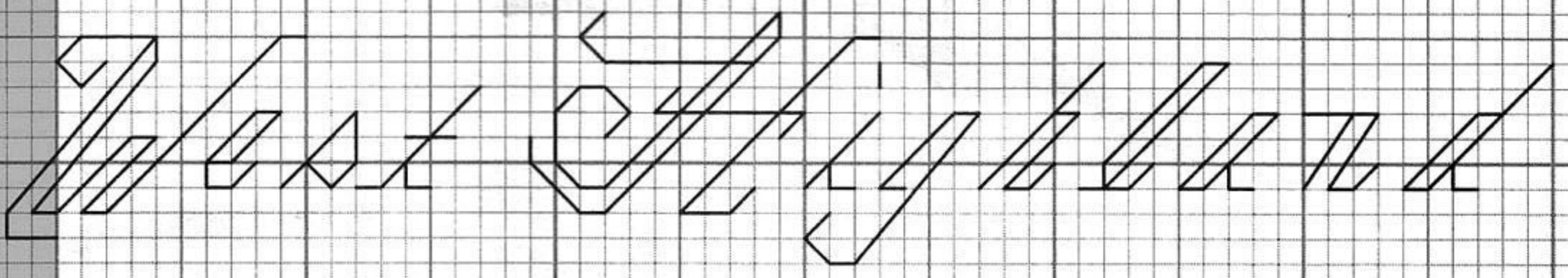
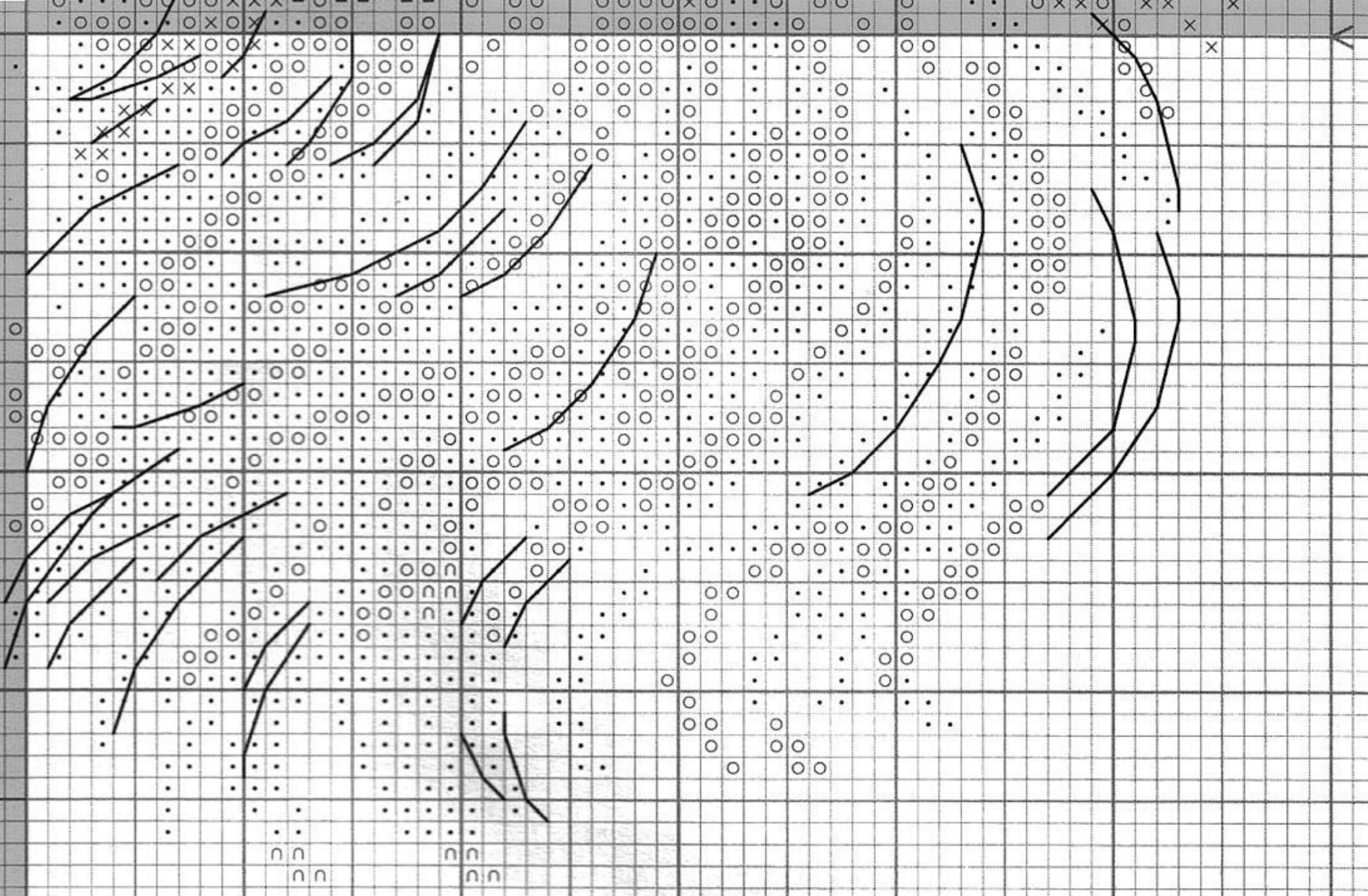


A dense grid of small characters (letters, numbers, and symbols) scattered across the right side of the grid, likely serving as a data table or a coordinate system. The characters are arranged in a regular pattern, possibly representing a coordinate system or a data table.



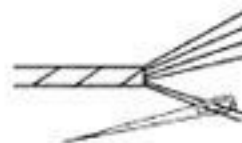








Cross Stitch - Point de Croix
Use 2 strands - Utiliser 2 brins



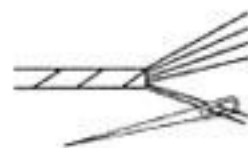
Please note: Cross Stitches are to be worked over 2 threads of the 32 Count Linen fabric provided

■	BLACK	310	(1)
×	LIGHT GREY	318	(4)
I	BLUE	334	(1)
Z	RED	347	(1)
T	DARK GREY	413	(1)
-	MEDIUM GREY	414	(2)
○	VERY LIGHT GREY	415	(11)
▲	DARK BROWN	938	(1)
F	LIGHT FLESH	950	(1)
Σ	GOLD	3045	(1)
↑	DARK FLESH	3064	(1)
●	DARK GREEN	3362	(1)
N	MEDIUM GREEN	3363	(3)
□	LIGHT GREEN	3364	(2)
C	DARK PINK	3607	(2)
⌈	MEDIUM PINK	3608	(4)
<	LIGHT PINK	3609	(2)
✕	VERY DARK GREY	3799	(1)
•	WHITE	BLANC	(14)

Figures in brackets () refer to number of lengths provided



Half Cross Stitch - Demi-Point
Use 1 strand - Utiliser 1 brin



Please note: Half Cross Stitches are to be worked over 2 threads of the 32 Count Linen fabric provided

L	DARK GREEN	3362
H	MEDIUM GREEN	3363
U	LIGHT GREEN	3364
✓	DARK PINK	3607
+	MEDIUM PINK	3608
△	LIGHT PINK	3609
∩	WHITE	BLANC



Back Stitch - Point de Piqué
Use 1 strand - Utiliser 1 brin



Please note: Back Stitch is to be worked over 2 threads of the 32 Count Linen fabric provided



DARK SLATE GREY 844 (8)

Figures in brackets () refer to number of lengths provided