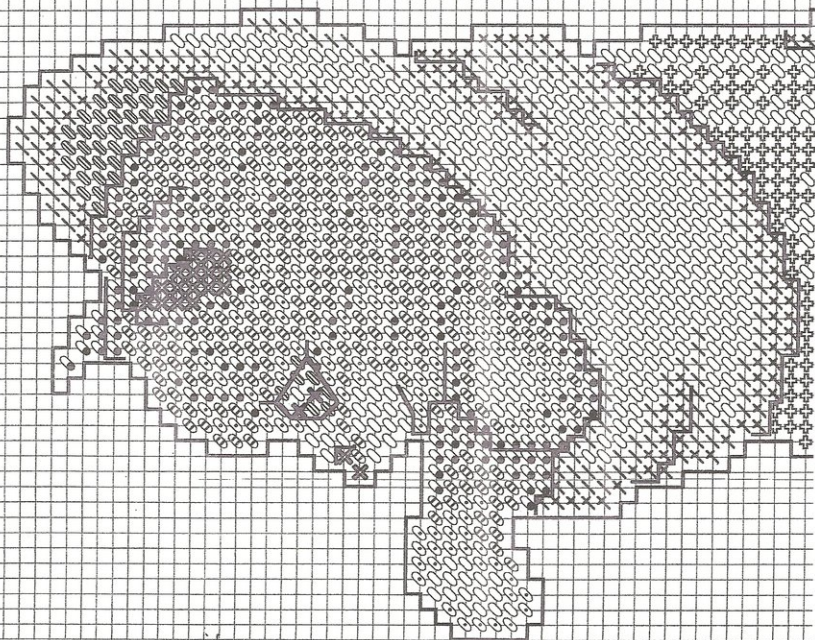
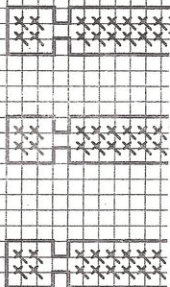
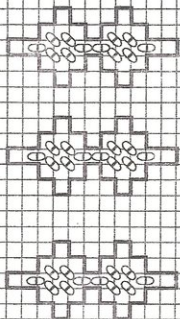
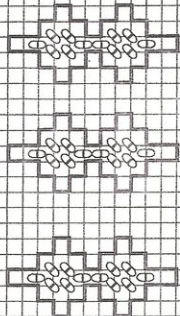
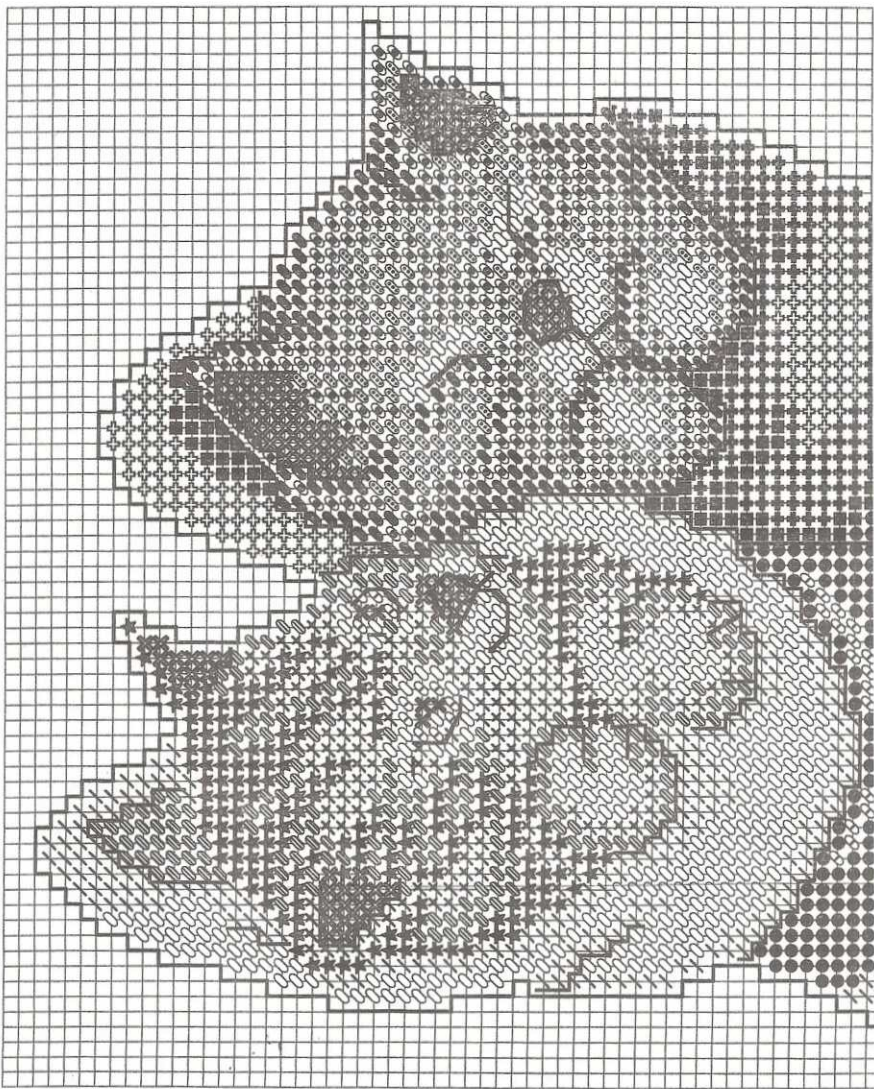
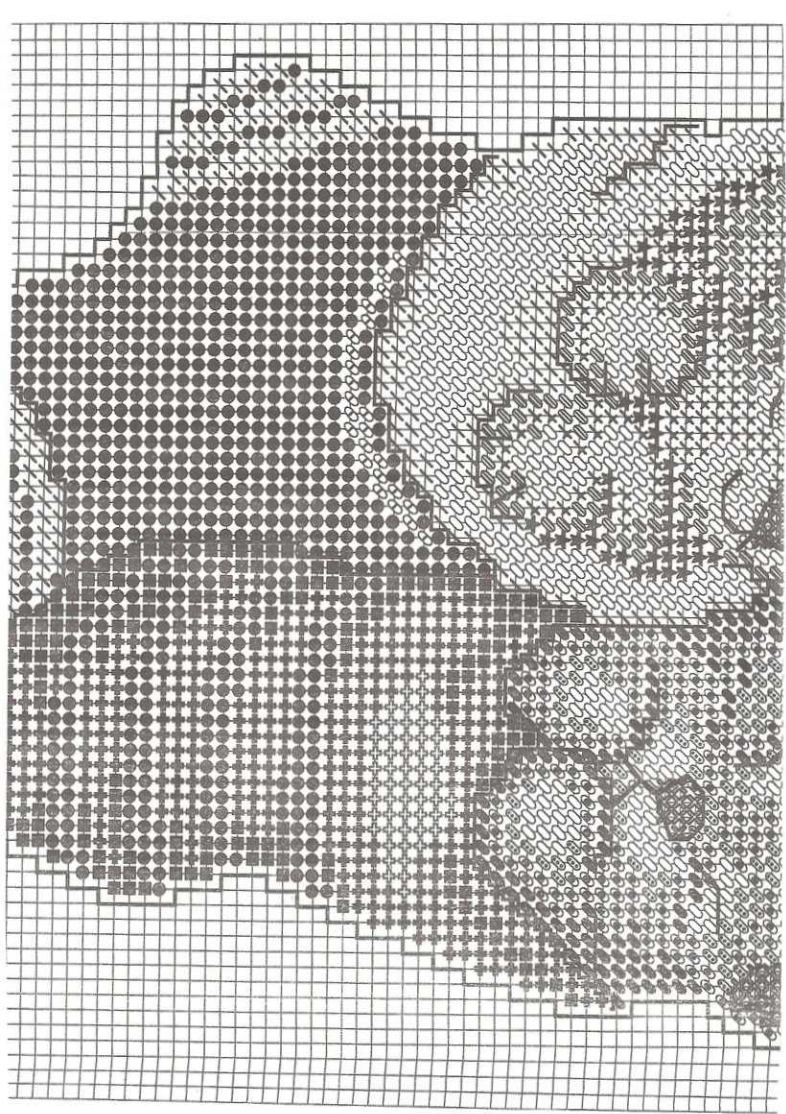


HOLLY LEAVES

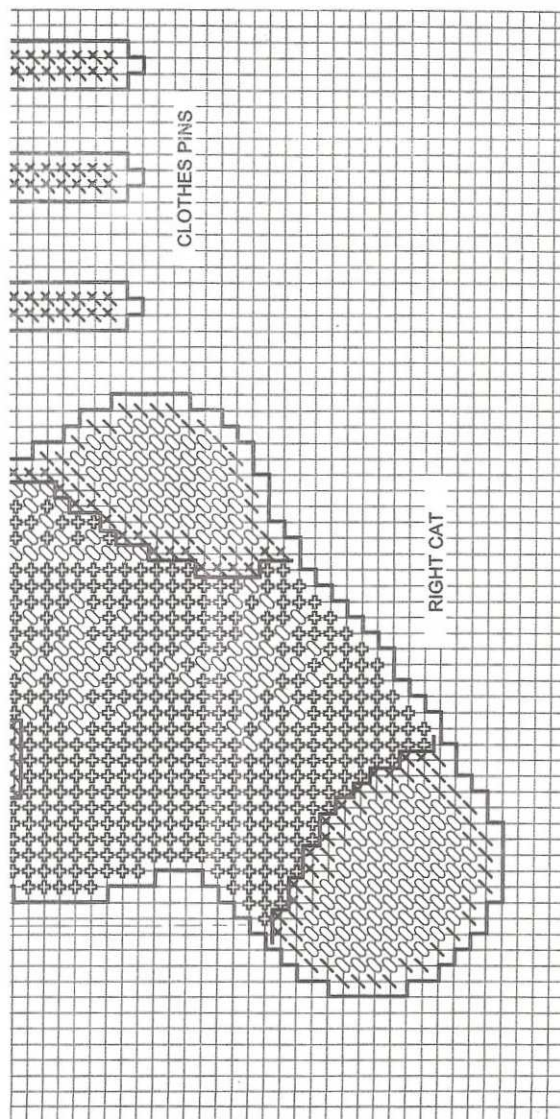






KIT # 2052
Half Cross Stitch Color Key

- WHITE
- / OFF WHITE
- × LT BROWN
- ◊ BROWN
- ★ DK BROWN
- ⊕ LT RED
- ⊕ RED
- DK RED
- ⊗ PINK
- ◊ LT GOLD
- ◊ GOLD
- ◊ LT GREY
- ◊ GREY
- ◊ DK GREY
- ◊ RUST
- ◊ LT GREEN
- DK GREEN
- ⊗ BLACK



CLOTHES PINS

RIGHT CAT

"KITTIES IN STOCKINGS"

WALL HANGING PLASTIC CANVAS INSTRUCTIONS

Your **Design Works** kit has been assembled using the finest materials available. Sufficient quantities and colors of yarn are included to complete the design when the colors and stitches on the embroidery chart are followed carefully. In order to avoid error, be sure to read through all instructions before starting to embroider.

CANVAS GRID - The plastic canvas grid included in this kit has 7 stitches to the inch. This refers to the number of bars, not holes per inch. Stitching is done over the bars as directed.

YARN - The yarn included in this kit is worsted weight acrylic. Use one strand for all stitching.

PREPARING THE YARN - Before you begin stitching; separate the yarn colors using the **COLOR KEY** as a guide.

THREADING THE NEEDLE - Fold yarn over shaft of needle. Pinch fold tightly between thumb and forefinger. Slide needle out of fold. While securely holding fold, place eye of needle over fold and push yarn through.

STARTING - Bring needle up at the start of the first stitch leaving 1 inch of yarn as a tail on the backside. Hold the tail in the direction you will be stitching, and cover it with the first few stitches to hold in place. New threads can be started by passing needle through several stitches on the backside of your work.

ENDING - Slide needle through several stitches on the backside of the work. Do not pull too tight! Snip yarn with scissors close to the surface. Avoid making knots, as your finished work will not remain flat.

TWISTED YARN - In case the yarn becomes twisted during working let the needle drop and allow the yarn to untwist.

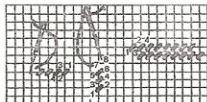
TO BEGIN:

THE CHART- THE PATTERN CHART shows the placement of the colors used. Each stitch is indicated with a symbol. The **COLOR KEY** shows the symbol for each color.

IT IS IMPORTANT TO WORK THE DESIGN EXACTLY HOW IT IS LAYED OUT ON THE PATTERN CHART TO AVOID RUNNING OFF THE CANVAS.

CUTTING THE CANVAS- It is suggested that before cutting the canvas you mark the outline with a permanent marker or China Marking pencil. Note that the cutting lines shown on the chart are on the bars that should be left intact. Cut in spaces BETWEEN the bars and then trim away nubs to make a clean edge.

HALF-CROSS STITCH: Unless otherwise directed, all design areas are worked in this stitch. Bring needle up at 1, down at 2, up at 3, down at 4 etc.

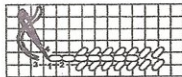


OVERCASTING: is done after the canvas has been cut out to finish the edges. Loosely stitch around the edge, taking one stitch in each hole on a straight edge, one stitch into each inside corner and three stitches on each outside corner.



BACK STITCH

This is a straight stitch used for details and decoration, worked on top of an area that has already been stitched. Refer to stitch chart for proper placement. Up at 1, down at 2, up at 3, down at 4, up at 5, etc.



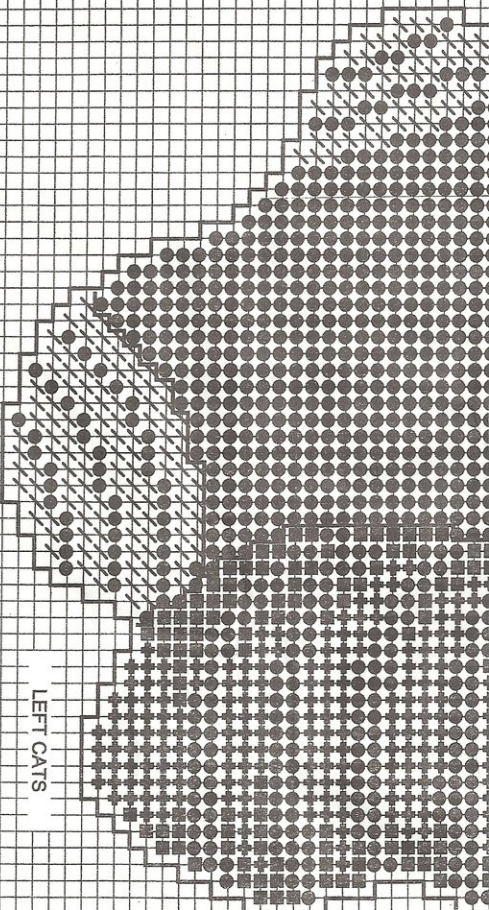
Designed By: Karen Harran

©2011 DESIGN WORKS CRAFTS INC. 170-6 Wilbur Place, Bohemia, N.Y. 11716 USA

KIT # 2082

Half Cross Stitch Color Key

WHITE	○	LT GOLD
OFF WHITE	○	GOLD
LT BROWN	○	LT GREY
BROWN	○	GREY
DK BROWN	○	DK GREY
LT RED	○	RUST
RED	○	LT GREEN
DK RED	○	DK GREEN
PINK	○	BLACK



ORDER OF WORKING

Page 2 of 3

1. **CUT OUT** Plastic Canvas using the patterns provided. **STITCH** each section as indicated using the **HALF CROSS STITCH**.

2. **OVERCAST** Clothes Pins with Rust. Leaves with Dark Green, Brown Cat - Overcast Face & Inner Ear with Brown, Stocking with Dark Green and Cuff with Off-White, Grey Cat - Overcast Head with Dark Grey, Stocking with Dark Red, Stripes with Dark Green, Gold Cat - Overcast Muzzle with Lt. Gold, Nose with Pink, Head & Paw with Rust, Stocking with Lt. Red, Toe, Heel & Cuff with Lt. Brown.

3. **DETAIL LINES** - **BACK STITCH** with 6 strands Black Floss as indicated by heavy solid lines within each section.

4. **ASSEMBLY** - Place Left Cats on a flat surface. Place Gold Cat's paw over Grey cat's head - glue or stitch to hold. Secure 2 Leaves & one Clothes Pin to each stocking - see photo. Glue one Red Pom Pom to each pair of leaves. Glue Red Cord to the back of each Clothes Pin - make a loop at each end of the cord to hang the finished piece.