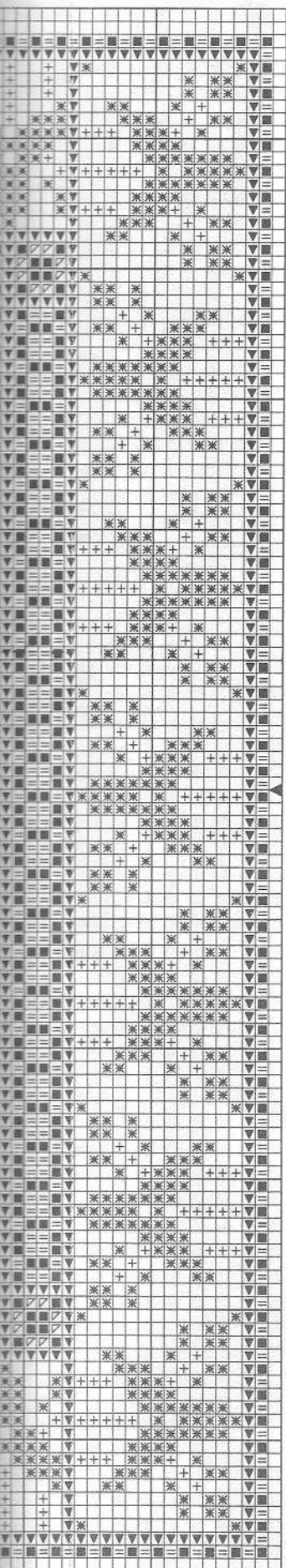




MATCH TO RIGHT SIDE HERE

MATCH TO LEFT SIDE HERE





9956 COLOR KEY

CROSS STITCH with 2 strands

- | | |
|-------------------------|---------------------|
| 415 LT. GREY (4) | 522 GREEN (5) |
| 318 GREY (3) | 3363 DK. GREEN (20) |
| 317 DK. GREY (3) | 677 LT. GOLD (1) |
| 472 PALE CHARTREUSE (3) | 729 GOLD (8) |
| 471 LT. CHARTREUSE (4) | 680 DK. GOLD (22) |
| 470 CHARTREUSE (7) | 869 BROWN (2) |
| 502 BLUE GREEN (11) | WHITE (11) |
| | 310 BLACK (48) |

DETAILS

- OUTLINES:** Back Stitch with 1 strand BLACK.
- DOTS:** French Knots with 2 strands WHITE wound once around the needle.

Numbers that appear BEFORE the color name refer to the DMC thread color. This number is given FOR IDENTIFICATION PURPOSES ONLY as your kit may contain another brand of thread SIMILAR in color to the DMC.

Numbers which appear AFTER the Color Name refers to the # of 36" strands of thread included in the kit. If your kit contains longer strands of thread, cut in half before counting and embroidering.

FRENCH KNOT

A) Up at 1. Hold thread taut 1" from base of thread. Wind thread around tip of needle.

B) Insert needle back into 1 while keeping thread taut. Carefully pull needle through to back while anchoring knot with thumb.