

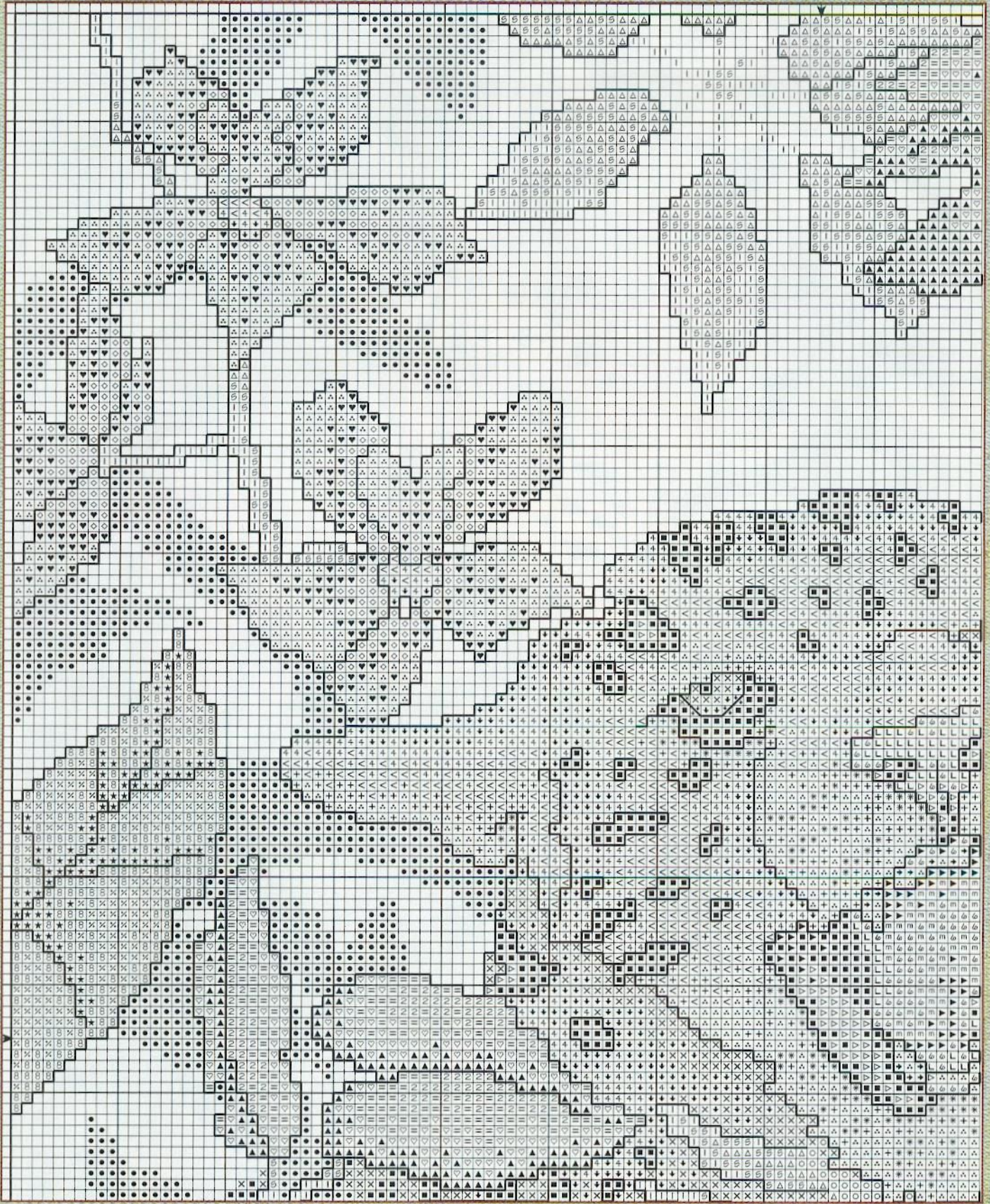
# Leopard

Designed by Mike Vickery



# LEOPARD

Project shown on page 43.  
Chart on 44, 45, 46, and 47.



**CROSS-STITCH**

**BACKSTITCH**

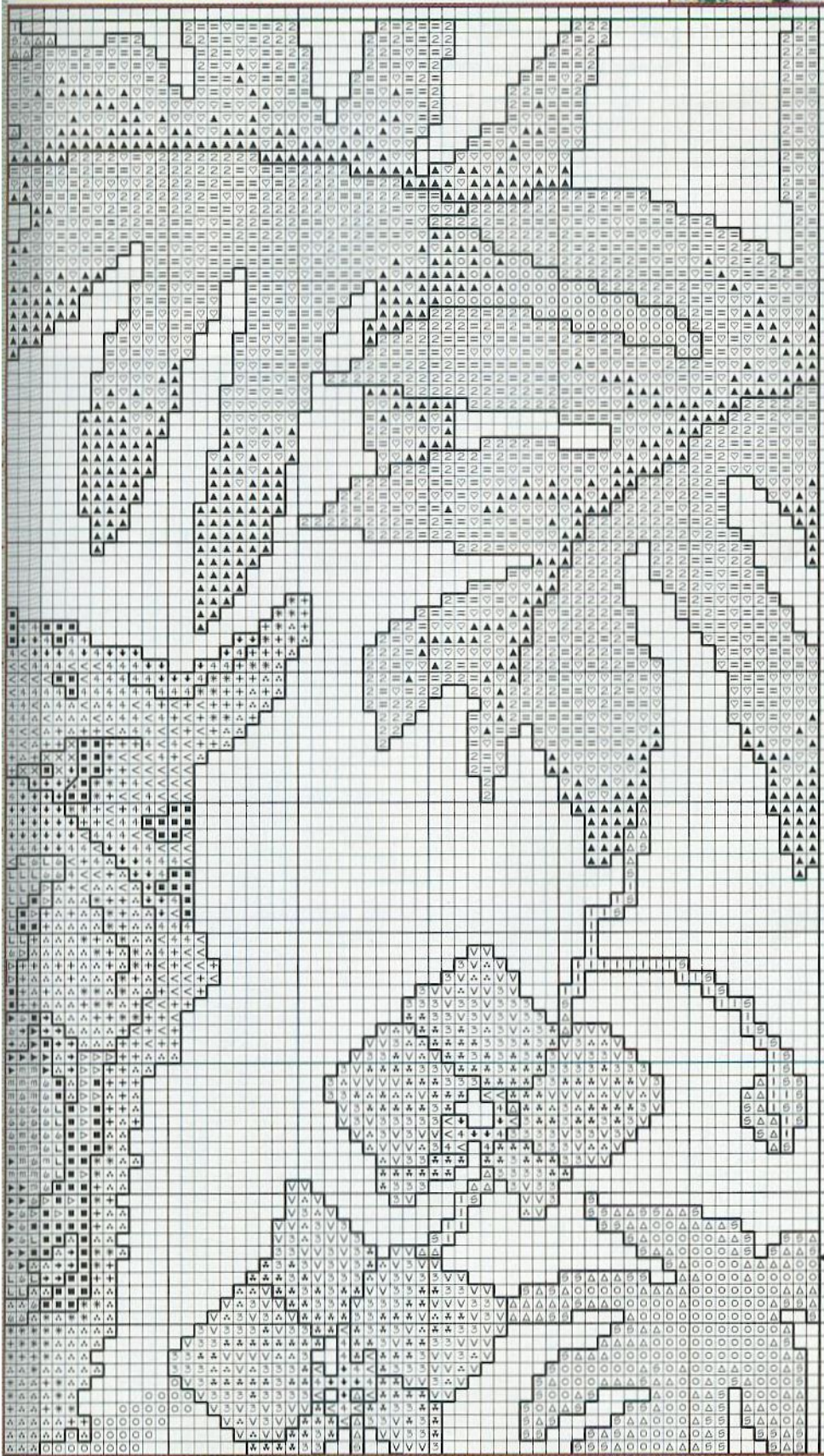
**STITCH COUNT**

2 strands

1 strand

150 w x 190 h

**APPROXIMATE FINISHED SIZE** 14-count: 10-5/8" w x 13-1/2" h



**DMC® 6-Strand Embroidery Floss Anchor®**

••	White White	2
m	304 Christmas Red, Med.	19
■	310 Black	403
S	320 Pistachio Green, Med.	215
ó	350 Coral, Med.	11
L	352 Coral, Lt.	9
△	367 Pistachio Green, Dk.	217
I	368 Pistachio Green, Lt.	214
▷	413 Pewter Gray, Dk.	401
*	644 Beige Gray, Med.	899
▲	700 Christmas Green, Bright	228
♥	702 Kelly Green	239
=	703 Chartreuse	238
2	704 Chartreuse, Bright	256
4	725 Topaz	305
<	727 Topaz, Vy. Lt.	293
♥	775 Baby Blue, Vy. Lt.	975
3	776 Pink, Med.	24
X	780 Topaz, Ultra Vy. Dk.	365
↓	783 Topaz, Med.	307
▶	815 Garnet, Med.	44
∨	818 Baby Pink	23
+	822 Beige Gray, Lt.	830
•	890 Pistachio Green, Ultra Dk.	218
✧	899 Rose, Med.	55
★	910 Emerald Green, Dk.	229
8	912 Emerald Green, Lt.	205
%	954 Nile Green	203
o	986 Forest Green, Vy. Dk.	246
◇	3325 Baby Blue, Lt.	144
→	3823 Yellow, Ultra Pale	386
b/s	3799 Pewter Gray, Vy. Dk.	236

b/s Backstitch

\*May not be exact match.

**BACKSTITCH INSTRUCTIONS**

└ All backstitch – DMC 3799

# LEOPARD

Project shown on page 43.

Chart on 44, 45, 46, and 47.

DMC® 6-Strand Embroidery Floss Anchor®*		
••	White	2
m	304 Christmas Red, Med.	19
■	310 Black	403
S	320 Pistachio Green, Med.	215
ó	350 Coral, Med.	11
L	352 Coral, Lt.	9
△	367 Pistachio Green, Dk.	217
I	368 Pistachio Green, Lt.	214
▷	413 Pewter Gray, Dk.	401

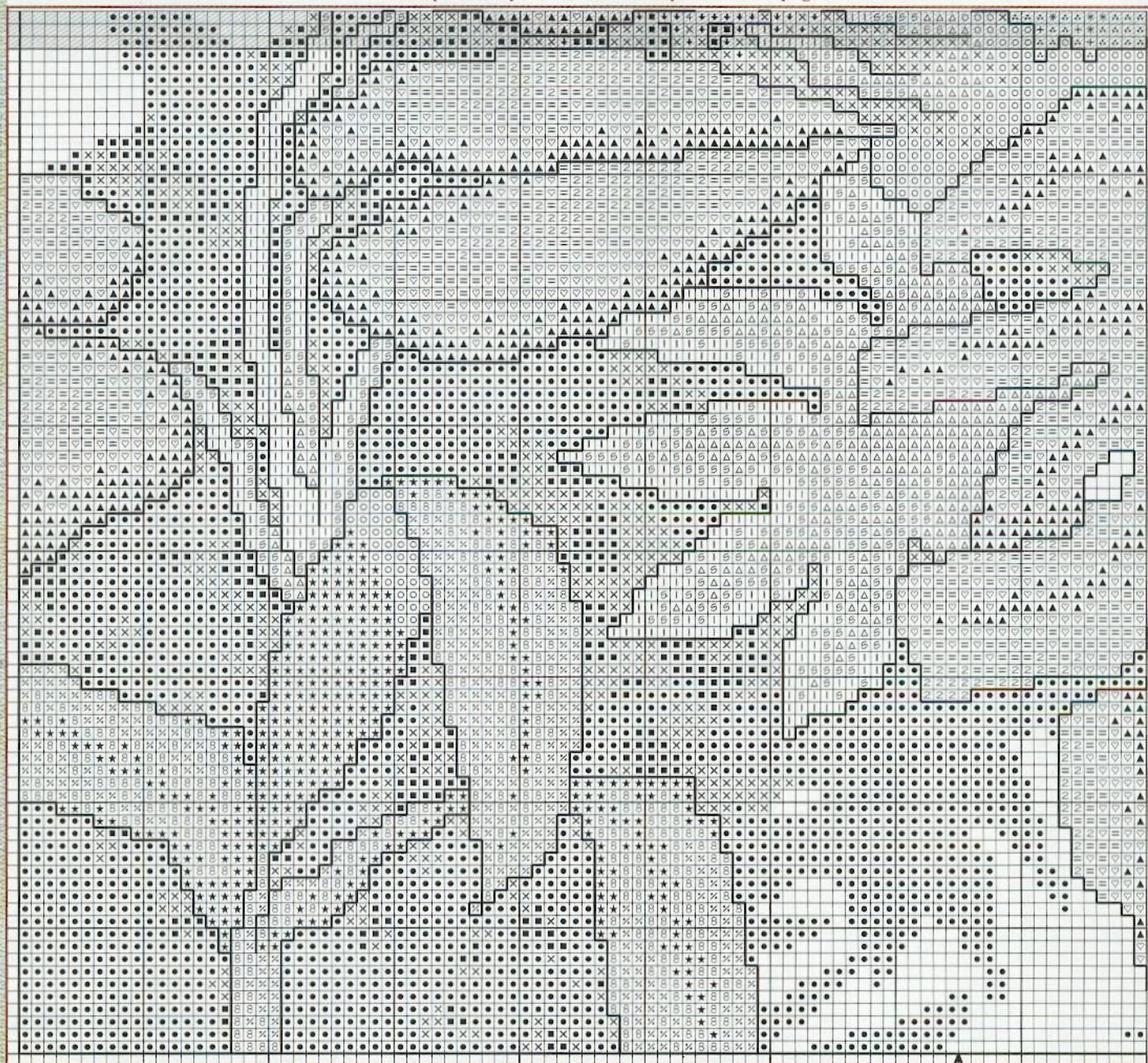
DMC® 6-Strand Embroidery Floss Anchor®*		
*	644 Beige Gray, Med.	899
▲	700 Christmas Green, Bright	228
♥	702 Kelly Green	239
=	703 Chartreuse	238
2	704 Chartreuse, Bright	256
4	725 Topaz	305
<	727 Topaz, Vy. Lt.	293
♥	775 Baby Blue, Vy. Lt.	975
3	776 Pink, Med.	24

DMC® 6-Strand Embroidery Floss Anchor®*		
×	780 Topaz, Ultra Vy. Dk.	365
↓	783 Topaz, Med.	307
▶	815 Garnet, Med.	44
∨	818 Baby Pink	23
+	822 Beige Gray, Lt.	830
●	890 Pistachio Green, Ultra Dk.	218
✕	899 Rose, Med.	55
★	910 Emerald Green, Dk.	229
8	912 Emerald Green, Lt.	205
%	954 Nile Green	203
○	986 Forest Green, Vy. Dk.	246
◇	3325 Baby Blue, Lt.	144
→	3823 Yellow, Ultra Pale	386
b/s	3799 Pewter Gray, Vy. Dk.	236

b/s Backstitch

\*May not be exact match.

Shaded area represents portion of chart repeated from page 44.



## 2002 Cross-stitch Events

**Feb. 15-17 Memphis, TN**  
"Always in Stitches"\*

**Mar. 15-16 Ft. Lauderdale, FL**  
"Stitching In The Sun"\*

**May 17-19 St. Louis, MI**  
Needlework Festival\*

**June 6 Arcola, IL**  
Raggedy Ann & Andy\*

**June 7 Tuscola, IL**  
The Country Sampler  
Autograph Party\*

**June 8-9 Tuscola, IL**  
"Stitching at the Museum"

**June 1-16 Arcola, IL**  
Rockhome Gardens  
National Cross-Stitch Show  
217-268-4106

**June 9 Mattoon, IL**  
Gadget Gal autographing at  
"Stitcher's Express"

**June 21-23 Bentonville, AR**  
"The 3 Needlewomen  
Gone Crazy"\*

**Aug. 23-25 Atlanta, GA**  
"Stitchin' In Dixie"\*

**Sept. 15-16 Mackinac Island, MI**  
"Stitching Through Time"\*

**Sept. 20-22 Gainesville, FL**  
"Sally's Stitching with the Experts"\*

**Oct. 4-6 Raleigh, NC**  
"Sarah's Needlework Weekend"\*

**Nov. 1-3 Myrtle Beach, SC**  
"Stitching At The Sea"\*

**Nov. 7-10 Myrtle Beach, SC**  
Pals Convention  
(email [cpals@hotmail.com](mailto:cpals@hotmail.com))

\*3 Needlewomen on Tour events.  
Contact Susan Greening Davis,  
PO Box 103, St. Louis, MO 48880  
or email [SGreening@aol.com](mailto:SGreening@aol.com)

### PROJECT SHOWN

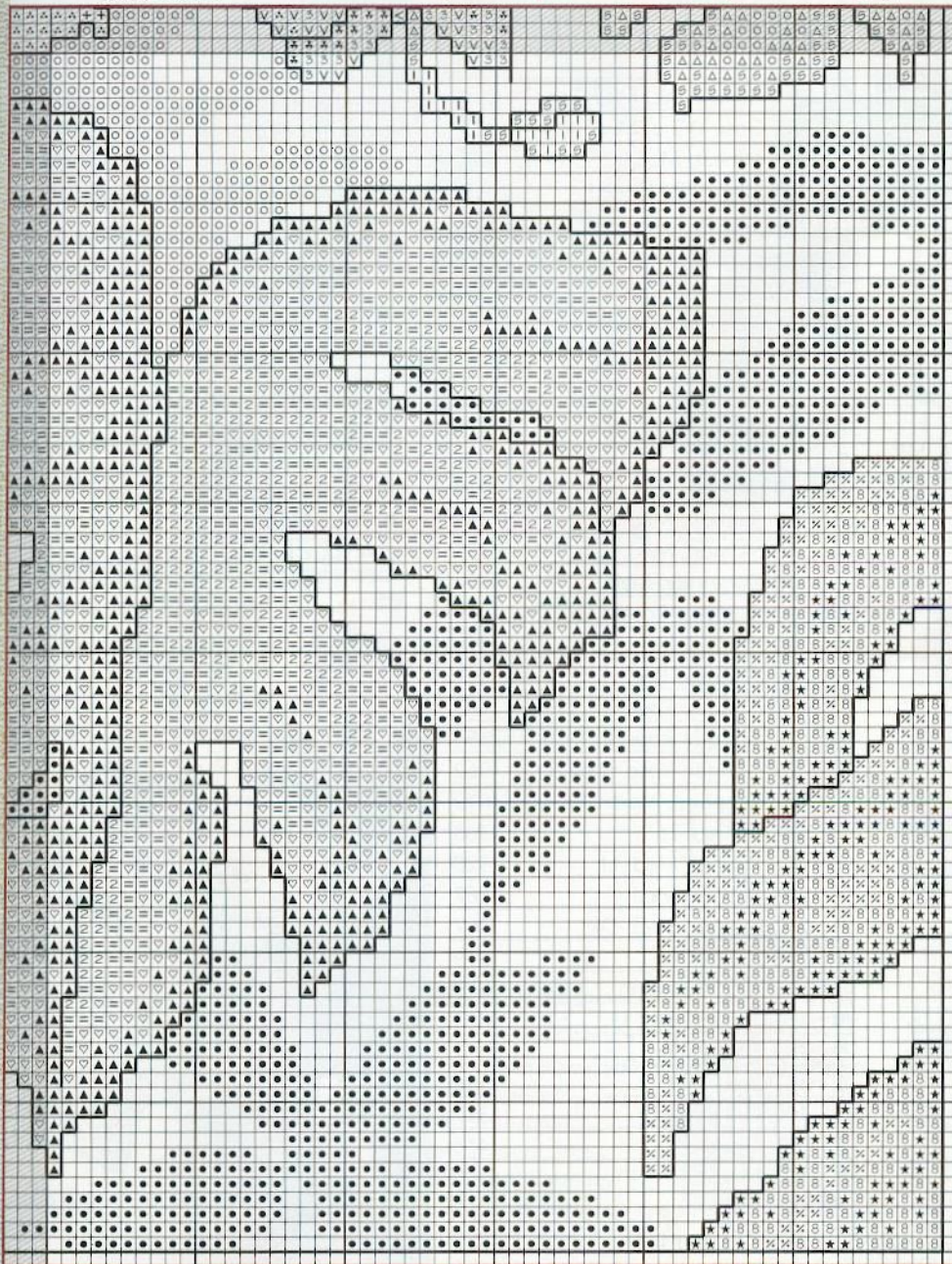
14-count Seacrest  
Green Rustico Aida -  
Zweigart® THE  
needlework fabric™  
DMC® 6-strand  
embroidery floss  
Mats and frame -  
Nebletts Frames

### BACKSTITCH INSTRUCTIONS

All backstitch -  
DMC 3799



Shaded area represents portion of chart repeated from page 45.



### Floss Stripping

Separate floss strands  
individually. Moisten a small  
piece of sponge and run the  
individual strands along it.  
This reduces the shine of the  
floss (except rayon) and breaks  
down any sizing in the fiber.