

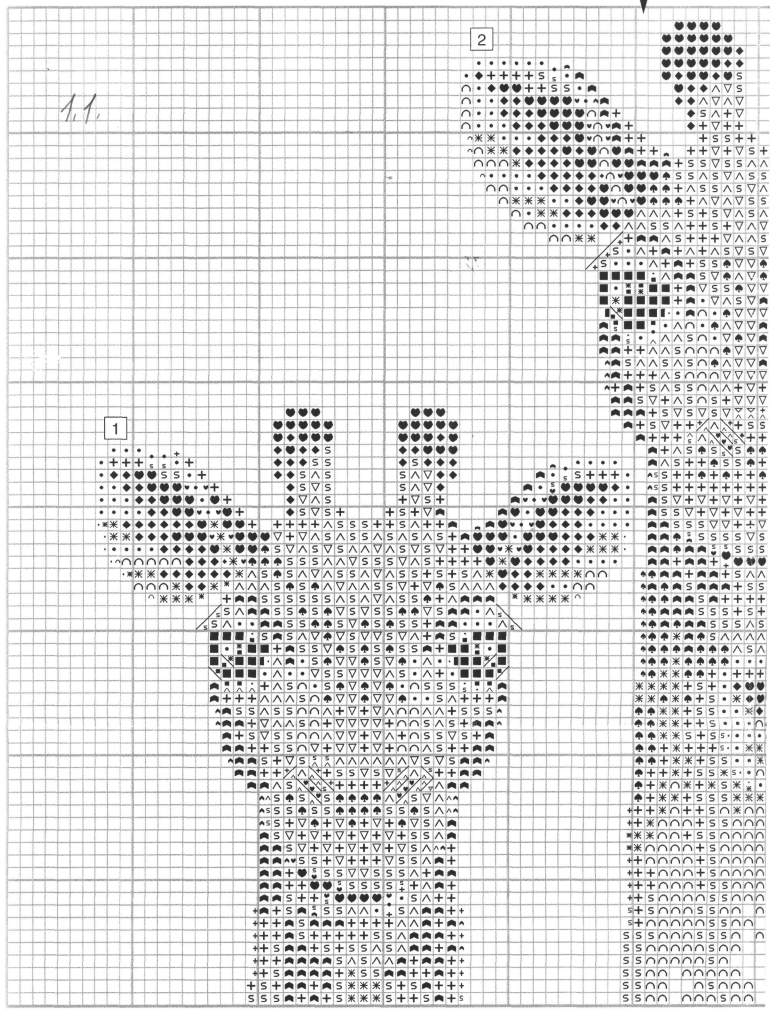
ONWARD AND UPWARD CROSS STITCH SHEET 1



1.1

2

1

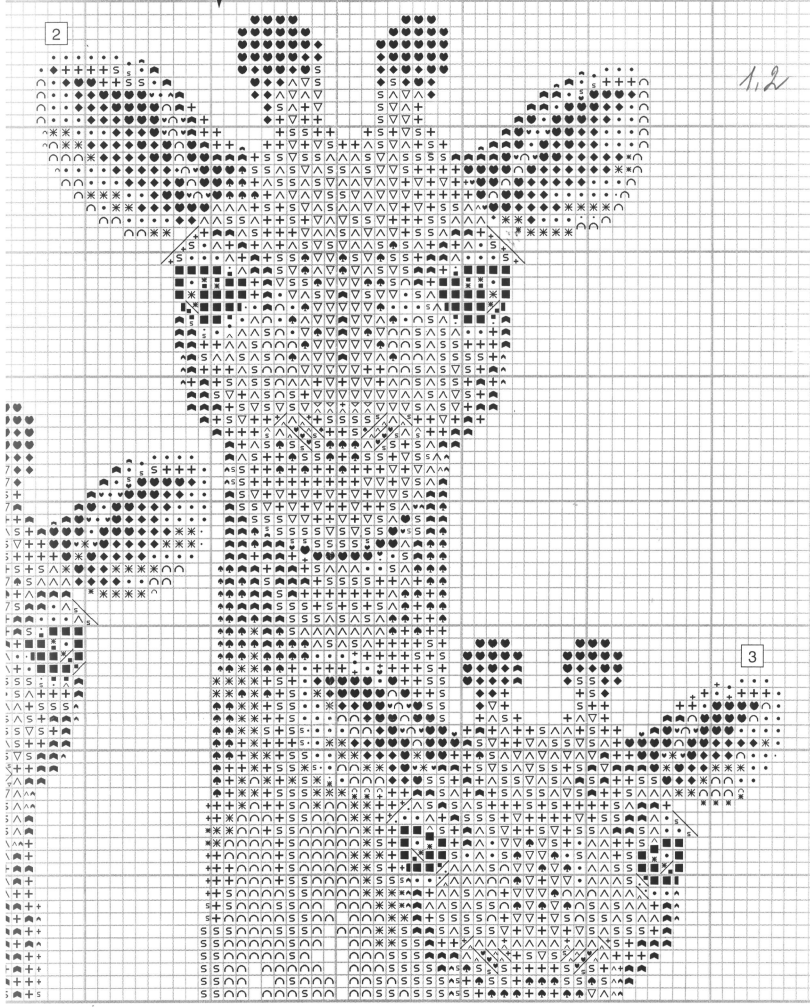


TITCH SHEET 1

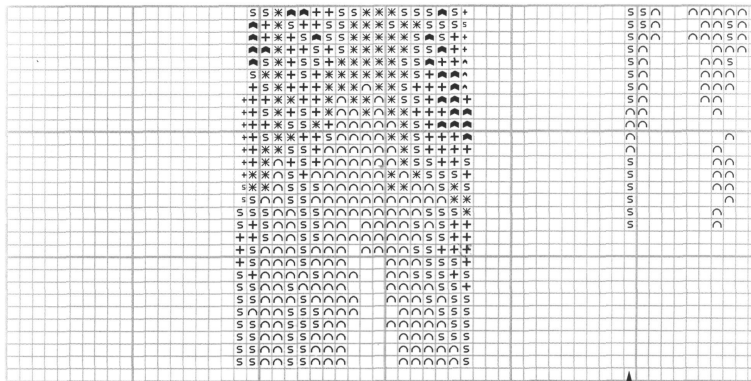


2

1,2



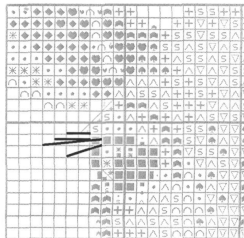
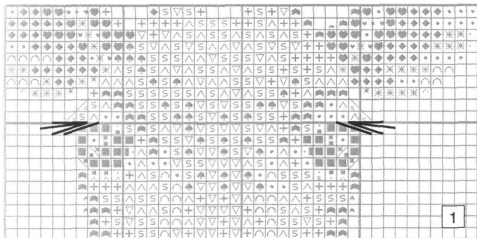
ONWARD AND UPWARD CROSS STITCH SHEET 2



2.1

2.2

ONWARD AND UPWARD OUTLINING



Outlining using one strand of thread, working in long stitches.
 ——— 310 (black)

To protect these charts tape along the folds using transparent tape.
Numbers refer to DMC colours.

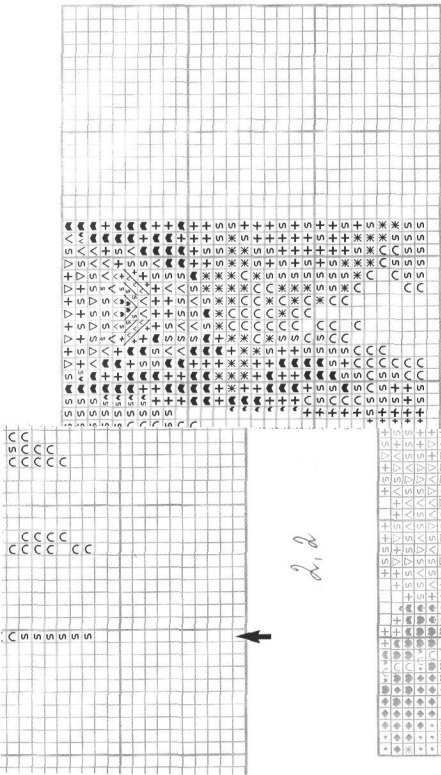
Cross stitch using two strands of one colour.

- 310 (black)
- S 407 (brown)
- * 452 (grey)
- ∧ 453 (pale grey)
- ▽ 779 (dark brown)
- ◇ 638 (deep bronze)
- ▽ 922 (orange)
- ∧ 945 (light brown)
- 3865 (off white)

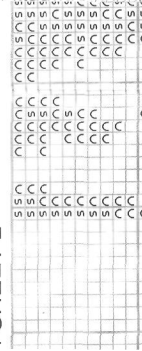
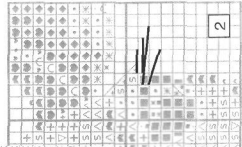
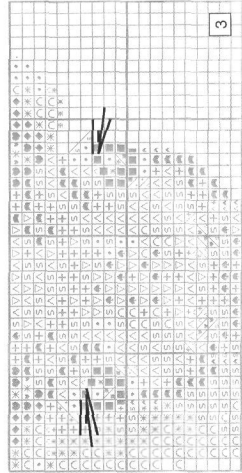
Cross stitch using one strand of each of two colours.

- 310 (black) and 779 (dark brown)
- + 407 (brown) and 632 (deep bronze)
- 632 (deep bronze) and 839 (chocolate)

Thin diagonal lines on this chart indicate diagonal half stitches.
See below for back stitch and long stitch detailing.



2.3



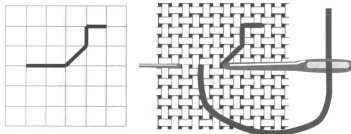
your work will show two 'squashed' stitches sitting side by side in an area equal to one full cross stitch.

Quarter Stitches

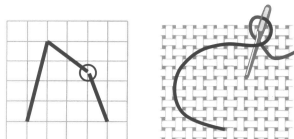
Quarter stitches are very rarely used in our designs. When they are called for the same rules apply as for fractional stitches above. You do not work a quarter of a cross but a whole cross taking up a quarter of a square and worked over one thread of the fabric in each direction.

Outlining

The key will tell you whether to use back stitch or long stitches for outlining. Back stitch is shown on the chart by straight lines and is worked as shown below.



Long stitches are used when a long unbroken line is required (e.g. for a ship's rigging). They are also used to clearly define window frames, etc. where a strong line is needed to stand out from the background. Where necessary a break in the line, or a circle drawn over the line, will indicate the end of one stitch and the beginning of the next.



Finishing Your Picture

Check the back of your work for loose ends of thread. Darn in any which are not securely fastened off and trim off any others.

You can wash your work if you wish. Use hand hot water and a mild powder or liquid (not a detergent). Rinse well in cold water and leave to drip dry or roll in a towel. While still damp iron under a clean tea towel. Finish by ironing the back. Your work of art is now ready to be stretched and framed.

Helpline

If you have any problems or queries or if you run short of thread then please ring 01889 575256.

Stitch Reference Diagrams

Symbol	Evenweave	Symbol	Evenweave
FULL CROSS STITCH		STRADDLED FULL CROSS STITCH	
VERTICAL HALF STITCH		DIAGONAL HALF STITCH	
TWO VERTICAL HALF STITCHES		TWO DIAGONAL HALF STITCHES	
HORIZONTAL HALF STITCH		DIAGONAL HALF STITCH	
TWO HORIZONTAL HALF STITCHES		TWO DIAGONAL HALF STITCHES	
QUARTER STITCH			

© Copyright 2000

HERITAGE STITCHCRAFT

Please note

(this note does not apply to chart only, even)

This kit contains either 27/28 count Lin 14 count Aida blockweave fabric.

Heritage Stitchcraft generally recommends are stitched on evenweave fabric.

If you have purchased this kit on blocky on evenweave or vice versa please return name of the design, for an exchange to

Heritage Stitchcraft, FREEPOST MID 21.

HERITAGE STITCHCRAFT.

Серия «чуда животного мира»

#VNU0690

Вперед и вверх

Специальная инструкция

Внимание: нить мулине состоит из 6 нитей (6/6). Используйте то количество нитей, что указано в инструкции.

Слова cross stitch using two strands of one colour означают, что указанные цвета вышиваются крестиком в 2/6 мулине одного цвета.

Слова cross stitch using one strand of each of two colours означают, что вышивать надо крестиком в смешанную нить, состоящую из 1/6 мулине одного цвета и 1/6 мулине другого цвета.

Слова outlining using one strand of thread, working in long stitch означают, что вышивать надо длинными стежками в 1/6 мулине указанного цвета.

Тонкие диагональные линии на главном чертеже обозначают стежки "полу-крестик". (См. другой чертеж)

Таблица внизу схемы указывает номер цвета и соответствующее ему количество нитей в наборе.