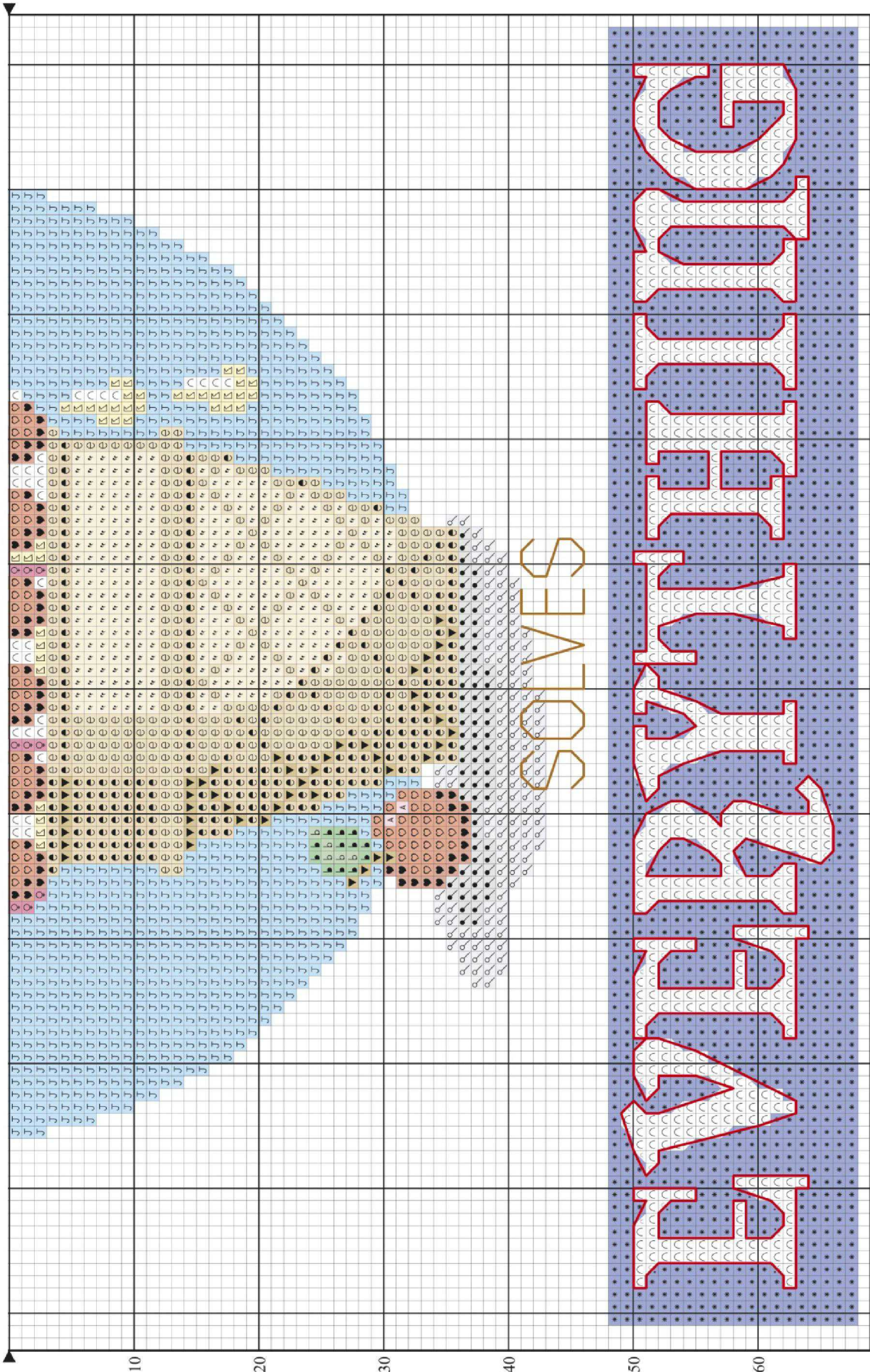


Ice Cream Canvas chart (top)



Ice Cream Canvas chart (bottom)

Ice Cream Canvas key

✕ Cross stitch in two strands

	DMC	Anchor	Madeira	
∩	B5200	1	2402	white
▼	167	373	1607	tan
♥	321	9046	510	dark red
♡	349	1098	212	red
☾	415	398	1802	grey
●	422	943	2102	light tan
♀	602	57	702	pink
Ⓐ	605	1094	613	light pink
●	738	367	2013	dark cream
●	739	366	2014	cream
—	745	300	111	yellow
☾	762	234	1804	light grey
★	798	131	912	blue
●	912	209	1213	mint green
●	955	206	1210	light mint green
●	988	243	1402	green
Ⓙ	996	433	1103	electric blue
Ⓛ	3078	292	102	light yellow

✕ Backstitch in one strand

—	B5200	1	2402	white
—	167	373	1607	tan

✕ Trimits seed beads

●	97773			pastel multi
---	-------	--	--	--------------

STITCH COUNT 136 high x 105 wide

DESIGN AREA 14 HPI (28-count evenweave) – 24.5x19cm (9¾x7½in)

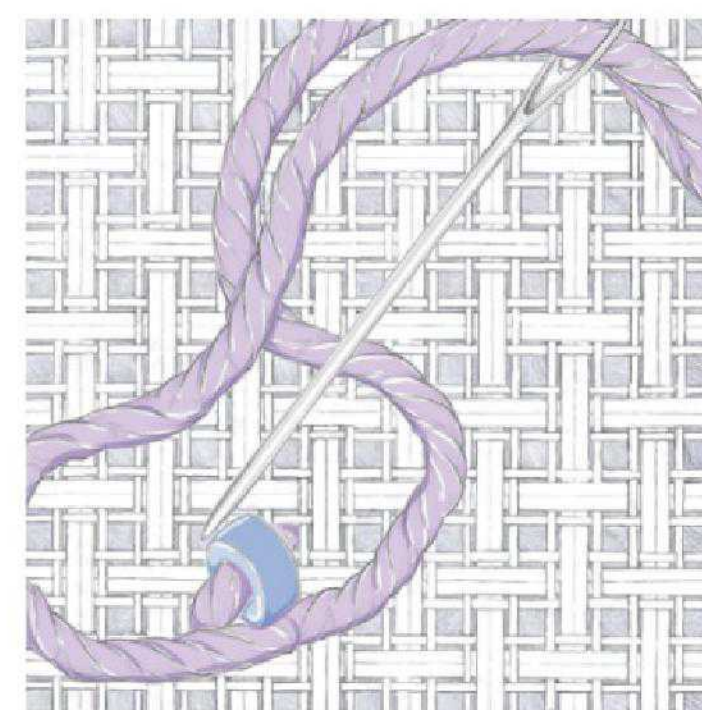
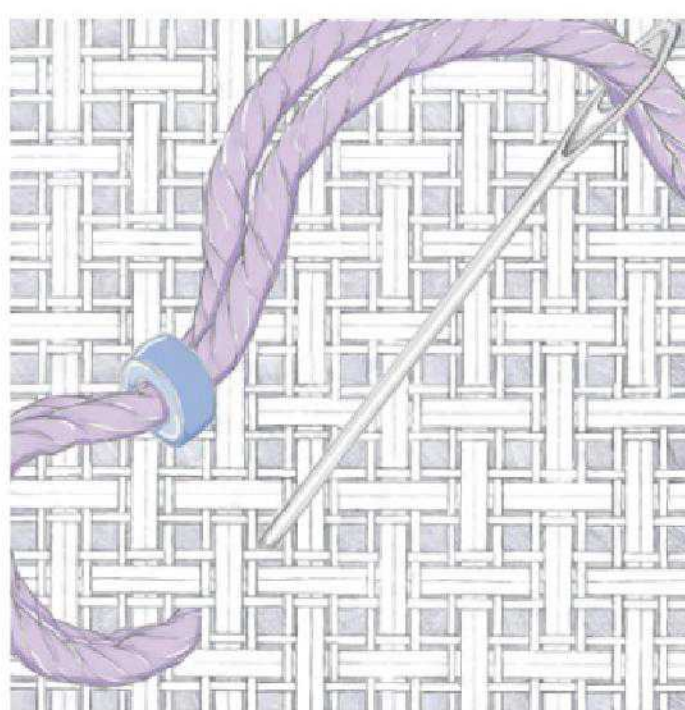
This design was stitched using DMC stranded cotton and Trimits seed beads



How to...

add seed beads

To attach your beads, use a whole cross stitch to help keep the beads upright and create a consistent finish. Attach the bead to the design with the bottom arm of a cross stitch and then add the top arm of the stitch, making sure that one strand of thread falls on either side of the bead to help hold it upright (picture, right).



Shopping list

- ✕ Zweigart* 14-count white aida measuring 41x30cm (16x12in)
- ✕ Stranded cotton as listed in the key
- ✕ Trimits seed beads as listed in the key, available from Sew and So*
- ✕ Size 24 tapestry needle; beading needle
- ✕ Blank art canvas measuring 30x21cm (12x8¼in) from local craft stores

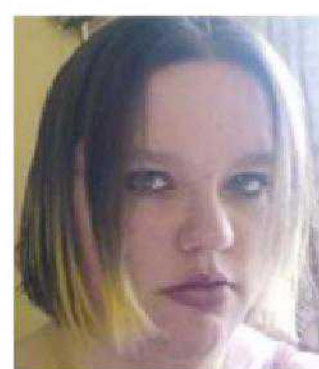
Thread & fabric cost
Approximately £22

*For stockists see page 90



TOP TIP

- A beading needle is finer than your tapestry needle, so it'll be a breeze for adding seed beads – use stranded cotton to match the stitches below



Zoe READER PANEL

“ I really like this ice cream poster... and I love ice cream – I could eat it all year round! The design would also go well with the colour scheme in my bedroom, and I think it would look great in a pale wooden frame. ”