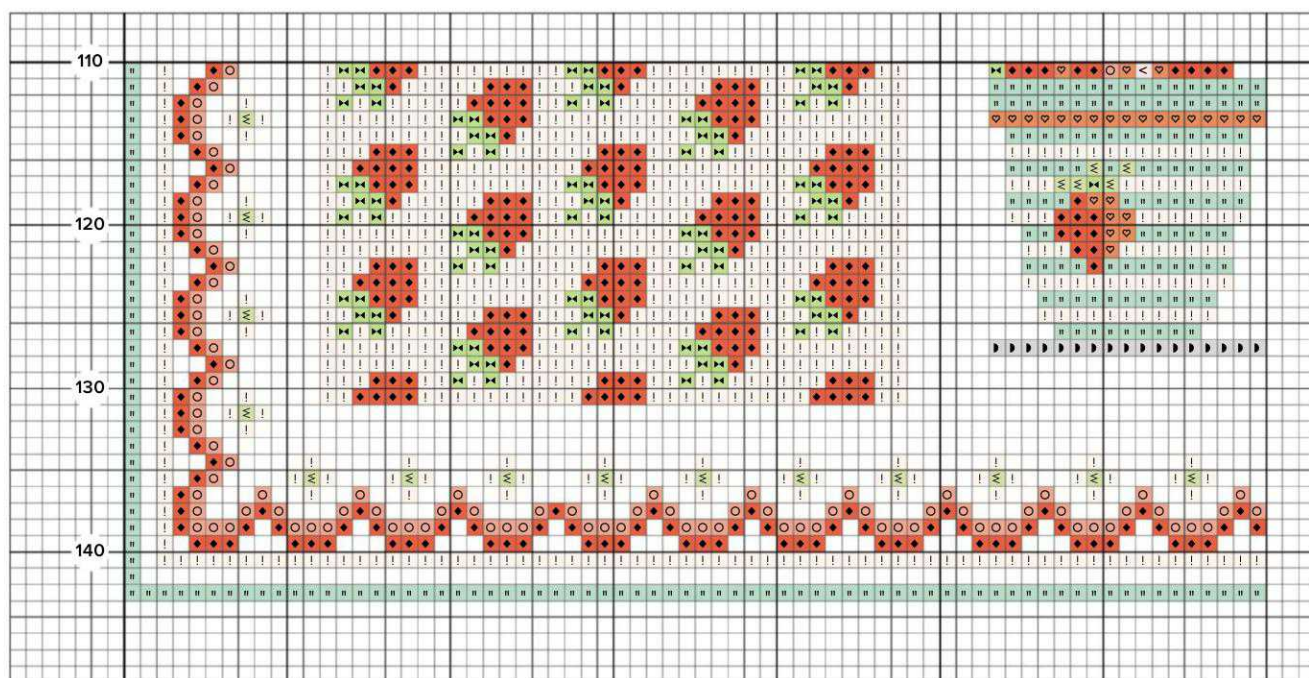


BERRY SWEET

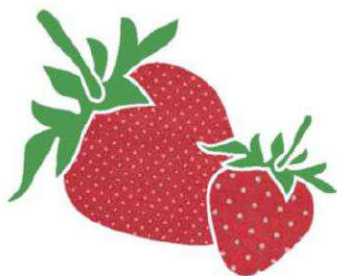


Stitch count: 143 high x 143 wide

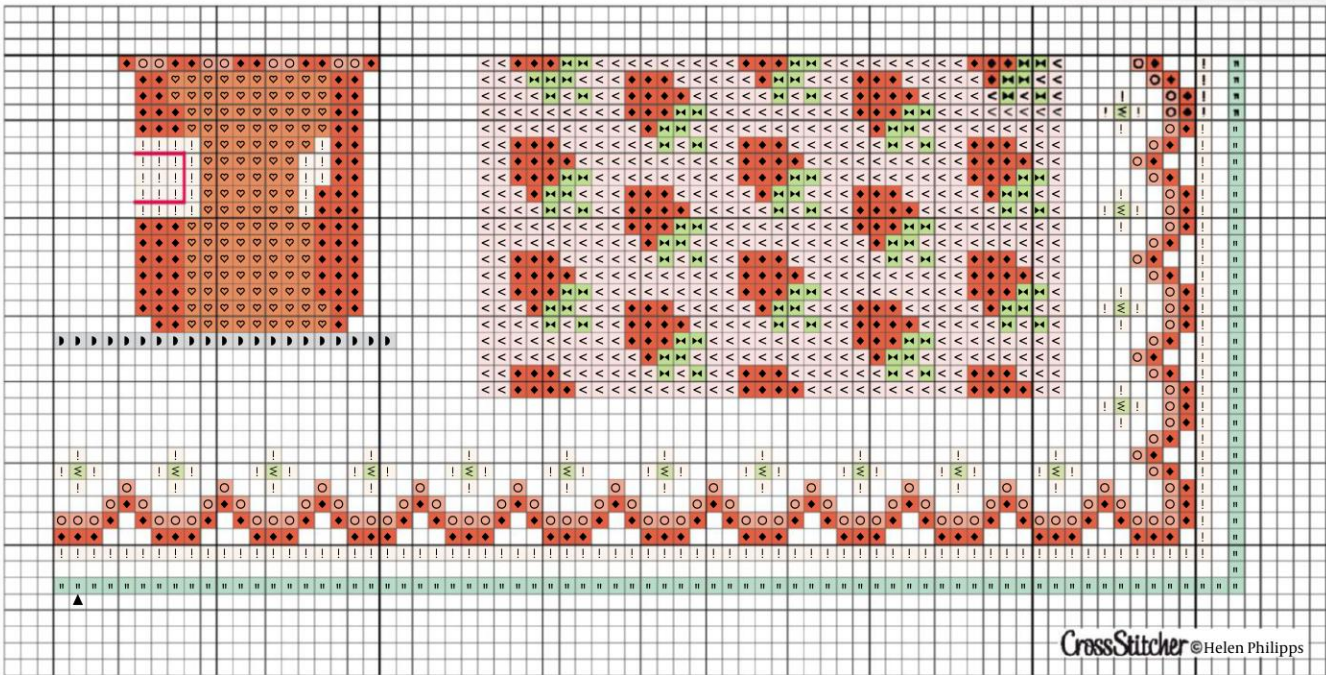
Design size: 25.5x25.5cm (10x10in)

Stitch time: 40 hours

This design was stitched on 28 count
evenweave over two threads of fabric.



	DMC	Anchor	Madeira		DMC	Anchor	Madeira
Cross stitch in two strands				Cross stitch in two strands			
	318	399	1802		973	290	105
	349	013	212 (2)		blanc	001	white (2)
	351	010	214	Backstitch in one strand			
	352	009	303		318	399	1802
	413	401	1713	baskets			
	703	238	1307		703	238	1307
	704	256	1308	leaves			
	819	271	501		3011	845	1607
	964	1092	1112	words			
				(2) indicates more than one skein is required			



Materials

Sampler

- Zweigart 28 count white Cashel linen, ref: 3281/100; 46x46cm (18x18in)
- Stranded cotton as listed in the key
- Size 26 tapestry needle
- Frame with a 30.5x30.5cm (12x12in) aperture
- Mount board to fit frame

For stockist details see page 86

It's easy to extract one of the sampler's sections to stitch as a pretty card instead