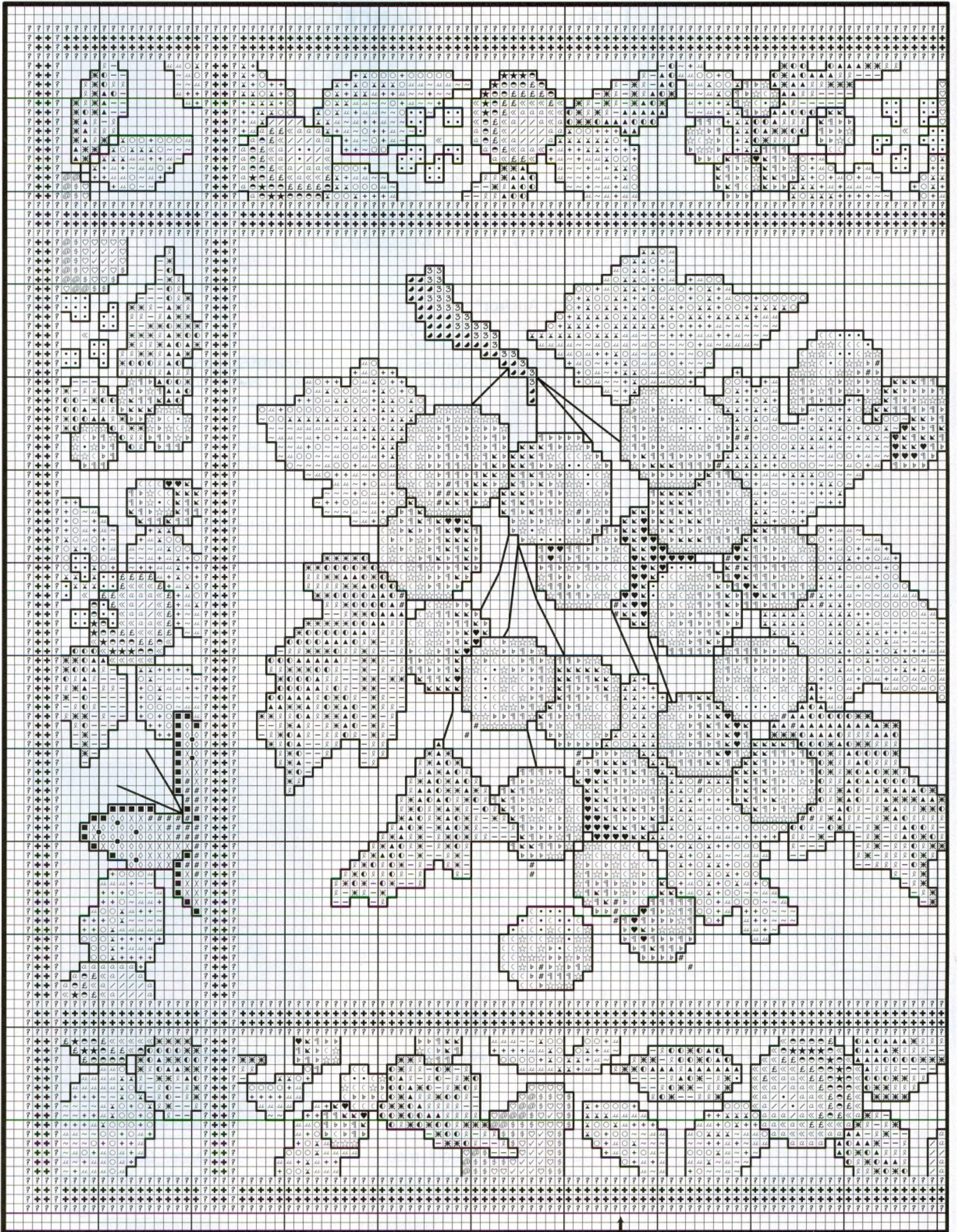
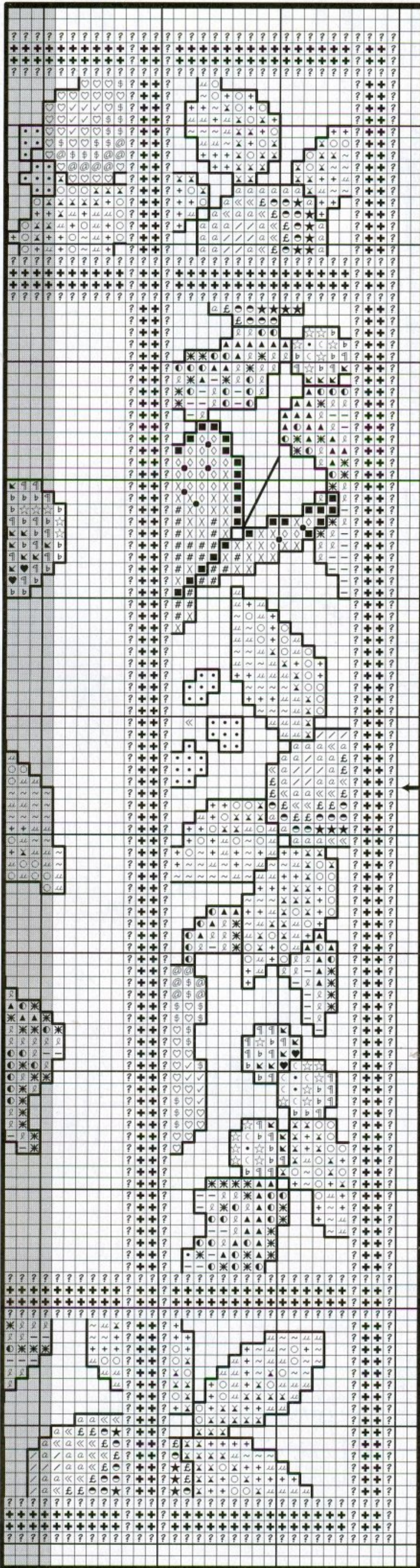


Fruitful Abundance: Blueberries



Shaded portion indicates overlap from previous page.



FRUITFUL ABUNDANCE: BLUEBERRIES

Designed by Marie Barber

Materials:

- 14" x 14" piece 32-count shell linen from Wichelt Imports, Inc.*
 - One skein each DMC® or Anchor® six-strand embroidery floss listed**
 - Size 24 tapestry needle
 - Professionally framed*
- *See "Where to Find It" on page 56.
**Refer to color code.

DMC® Anchor®

- | | | | |
|----|------|------|------------------------|
| ● | 839 | 1086 | beige-brown, dk. |
| 3 | 3863 | 378 | mocha beige, med. |
| # | 433 | 358 | brown, med. |
| X | 3826 | 1049 | golden brown |
| ◇ | 977 | 1002 | gold-brown, lt. |
| ♥ | 3750 | 1036 | antique blue, vy. dk. |
| ◀ | 3750 | 1036 | antique blue, vy. dk. |
| ◀ | 3765 | 170 | peacock, vy. dk. |
| ¶ | 3765 | 170 | peacock, vy. dk. |
| b | 807 | 168 | peacock |
| b | 813 | 161 | blue, lt. |
| ☆ | 827 | 160 | blue, vy. lt. |
| ◁ | 775 | 128 | baby blue, lt. |
| @ | 3815 | 877 | celadon green, dk. |
| \$ | 988 | 243 | forest, med. |
| ♡ | 704 | 256 | chartreuse, bt. |
| ✓ | 369 | 1043 | pistachio, vy. lt. |
| × | 3011 | 8556 | khaki, dk. |
| ○ | 3012 | 855 | khaki, med. |
| ○ | 470 | 266 | avocado, lt. |
| + | 471 | 265 | avocado, vy. lt. |
| + | 3013 | 853 | khaki, lt. |
| u | 3348 | 264 | yellow-green, lt. |
| ~ | 3348 | 264 | yellow-green, lt. |
| ~ | 712 | 926 | cream |
| ★ | 301 | 1049 | mahogany, med. |
| ● | 783 | 307 | gold |
| £ | 742 | 303 | tangerine, lt. |
| £ | 3821 | 305 | straw |
| « | 743 | 302 | yellow, med. |
| a | 744 | 301 | yellow, pl. |
| / | 3078 | 292 | golden yellow, vy. lt. |
| ▲ | 501 | 878 | blue-green, dk. |
| ● | 3363 | 262 | pine green, med. |
| * | 3364 | 261 | pine green |
| ℓ | 472 | 253 | avocado, ul. lt. |
| ℓ | 472 | 253 | avocado, ul. lt. |
| - | 712 | 926 | cream |
| . | 3865 | 2 | winter white |
| ■ | 3371 | 382 | black-brown |
| + | 3860 | 678 | cocoa |
| ? | 729 | 890 | old gold, med. |
| | 935 | 861 | avocado, vy. dk. |

Stitch count: 128H x 128W
Design size: 8" x 8"

Instructions: Cross stitch over two threads, using two strands of floss. When two colors are bracketed together, use one strand of each.

Backstitch over two threads, using one strand of floss.

Work French knot where ● appears in butterflies, using one strand 3865/2 and wrapping floss around needle twice.

Work straight stitch, using one strand of floss and couching where needed.

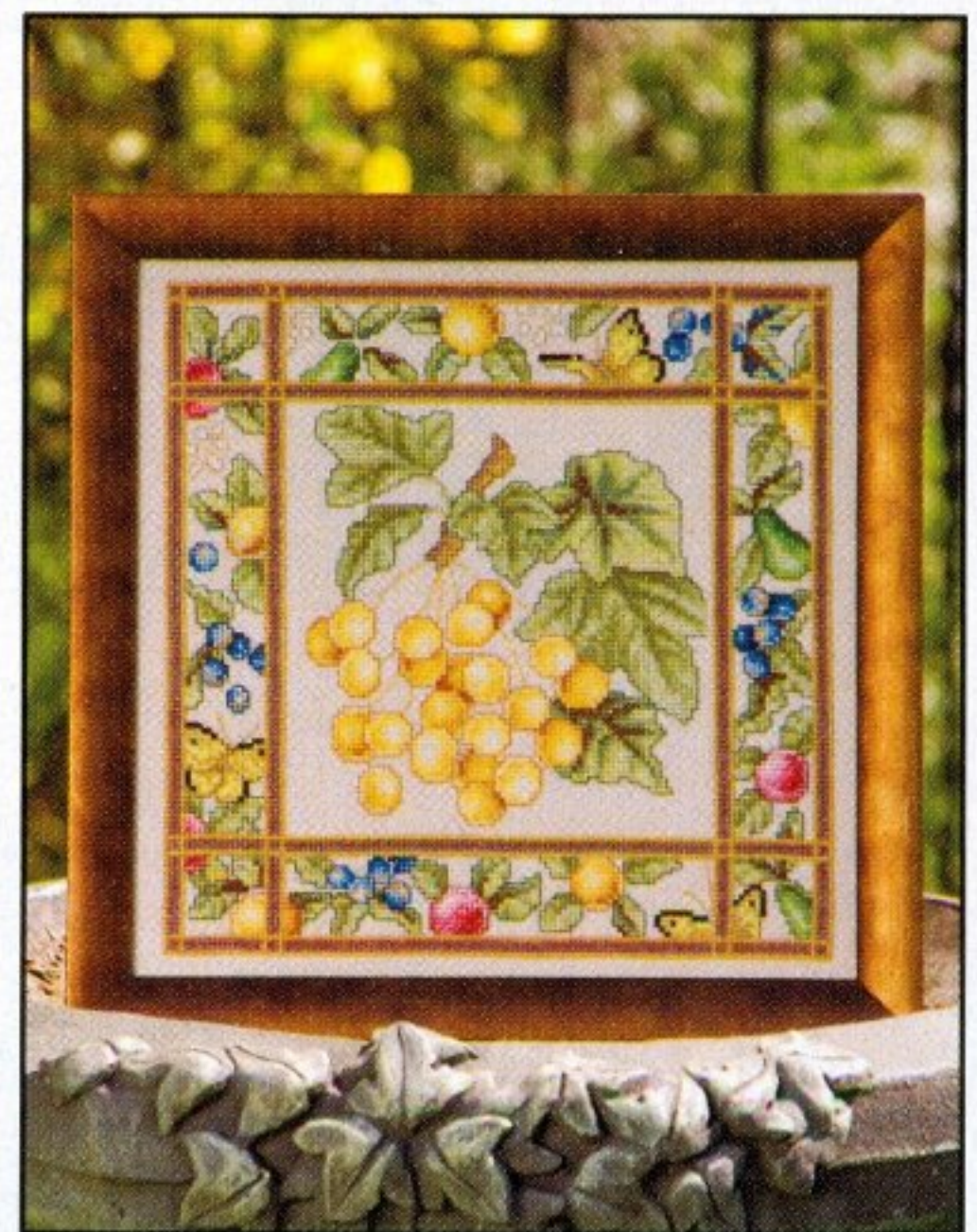
Backstitch instructions:

- | | | |
|------|------|---------------------|
| 935 | 861 | leaves, green fruit |
| 3750 | 1036 | blueberries |
| 3826 | 1049 | yellow fruit |
| 3045 | 888 | white flowers |
| 839 | 1086 | branches |
| 433 | 358 | butterflies |

Straight-stitch instructions:

- | | | |
|------|------|--------------------|
| 3826 | 1049 | blueberry stems |
| 3045 | 888 | butterfly antennae |

Stitched by Denise Hogan



Fruitful Abundance: Golden Cherries appeared in the August 2008 issue.