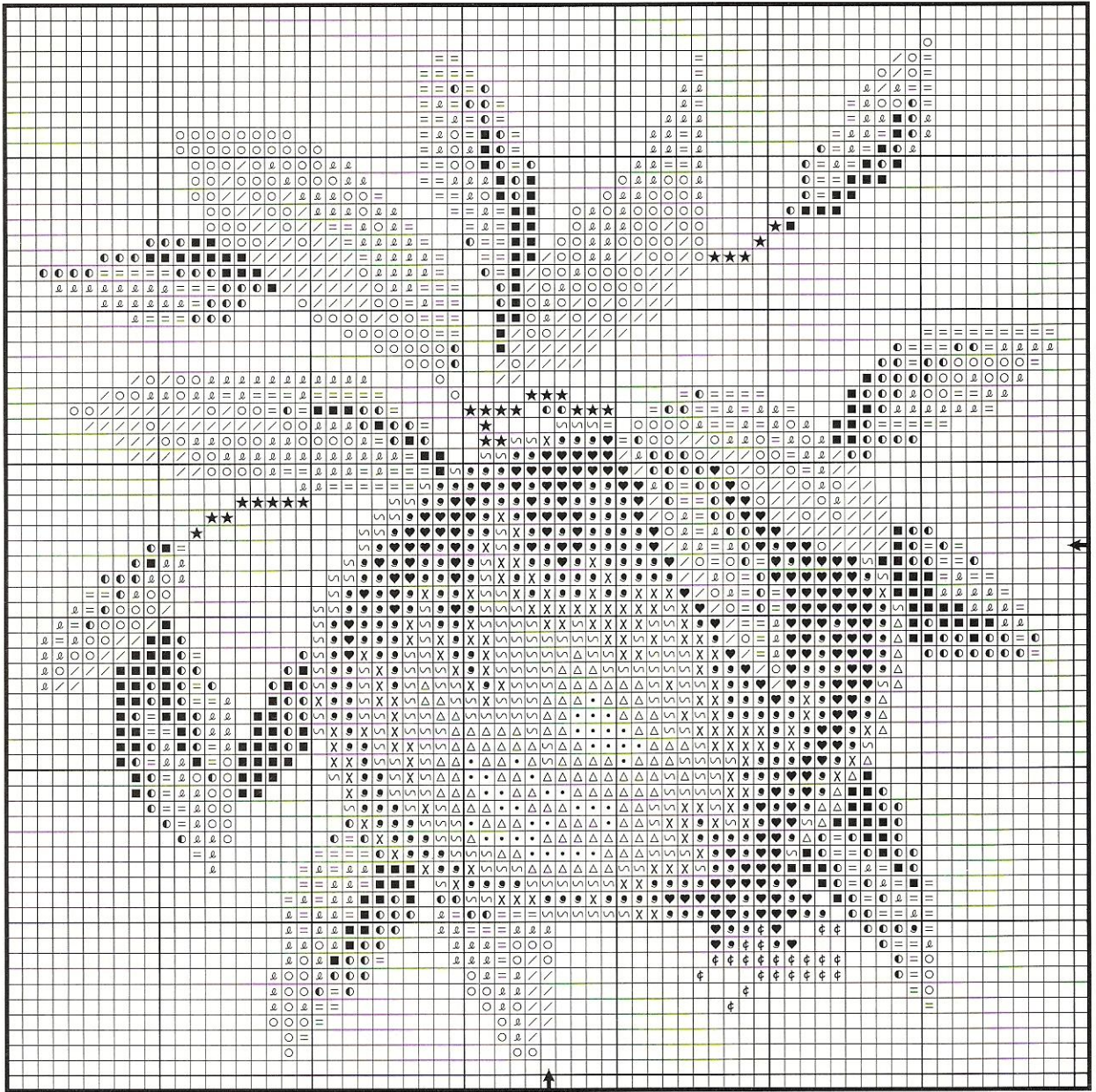


Pomegranate Chart



POMEGRANATE

Designed by Marie Barber

Materials:

- 12" x 12" (30cm x 30cm) piece 28-count lambswool linen from Wichelt Imports, Inc.*
- One skein each DMC® or Anchor® six-strand embroidery floss**
- Size 24 tapestry needle
- Professionally framed*
- *See "Where to Find It" on page 65.
- **Refer to color code.

DMC® Anchor®	
★ 3828	373 hazelnut brown
• 3825	323 pumpkin, pl.
△ 722	323 spice, lt.
⌈ 3778	1013 terra-cotta, lt.
∩ 209	109 lavender, dk.
⌋ 3778	1013 terra-cotta, lt.
× 552	99 violet, dk.
⊕ 3830	5975 terra-cotta
● 3777	1015 terra-cotta, vy. dk.
♥ 902	897 garnet, vy. dk.
⌋ 746	275 off white
⌈ 3819	278 moss green, lt.

○ 3819	278	moss green, lt.
⊂ 3819	278	moss green, lt.
⊃ 733	280	olive, med.
= 733	280	olive, med.
● 731	281	olive, dk.
■ 934	862	avocado, black
⊕ 3822	295	straw, lt.

Stitch count: 67W x 67H

Design size: 4⁷/₈" x 4⁷/₈" (12cm x 12cm)

Instructions: Cross stitch over two threads, using two strands of floss.

Stitched by Debbie Carlisle