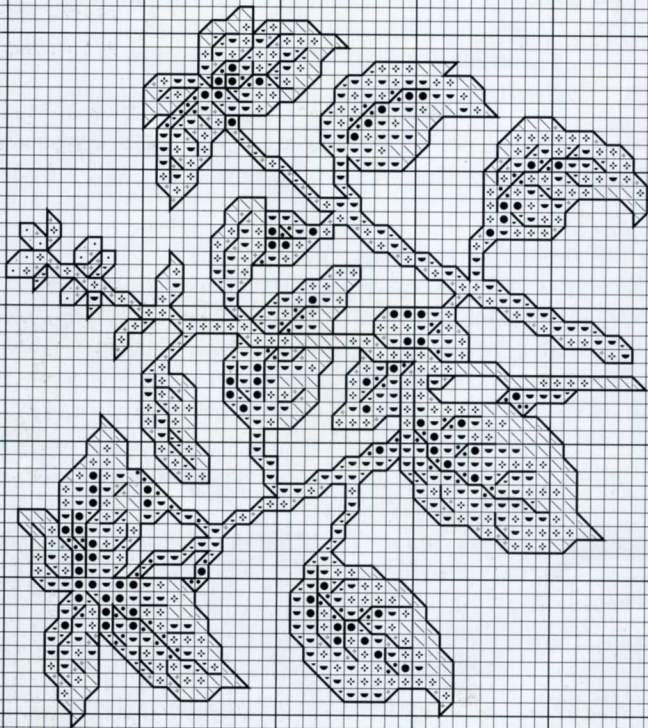
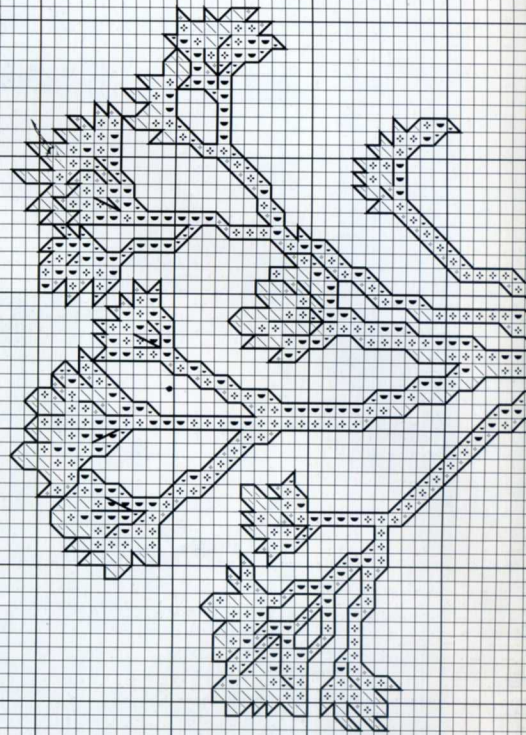
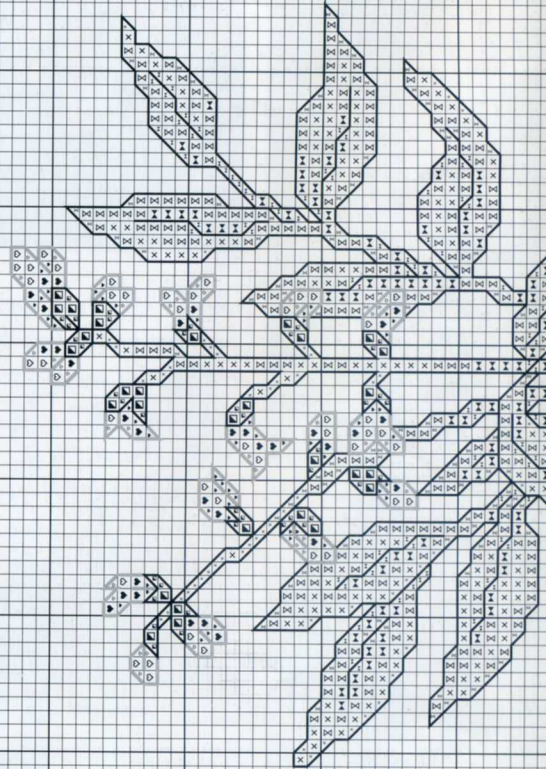
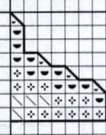
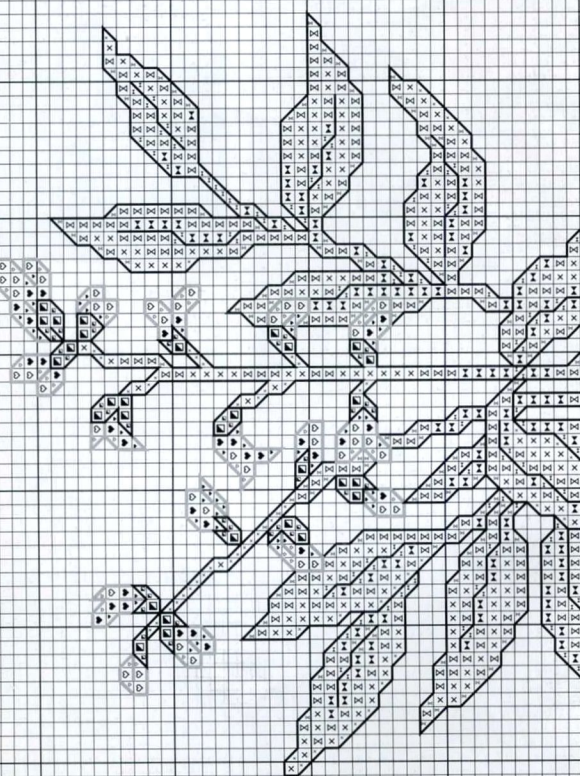
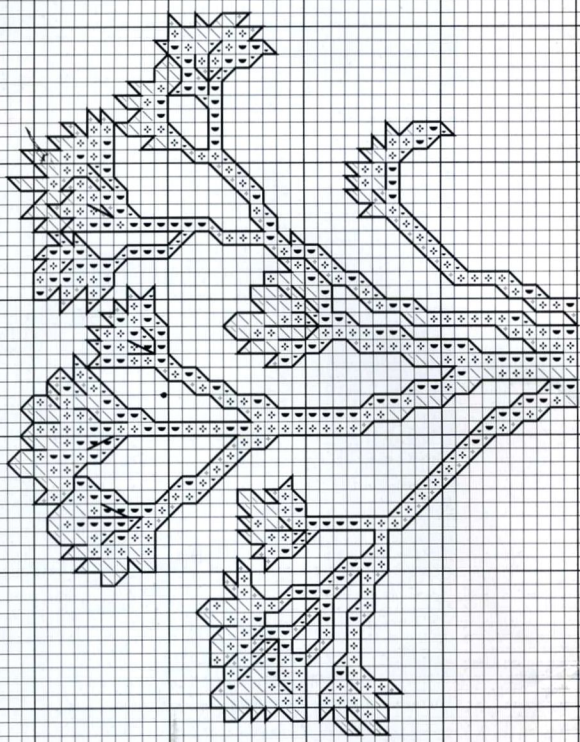


BREGANO



BASIL

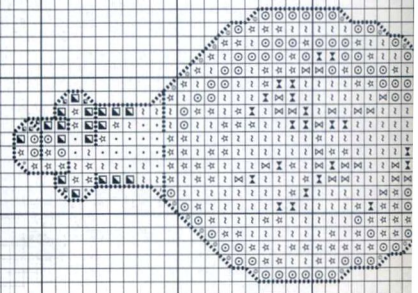
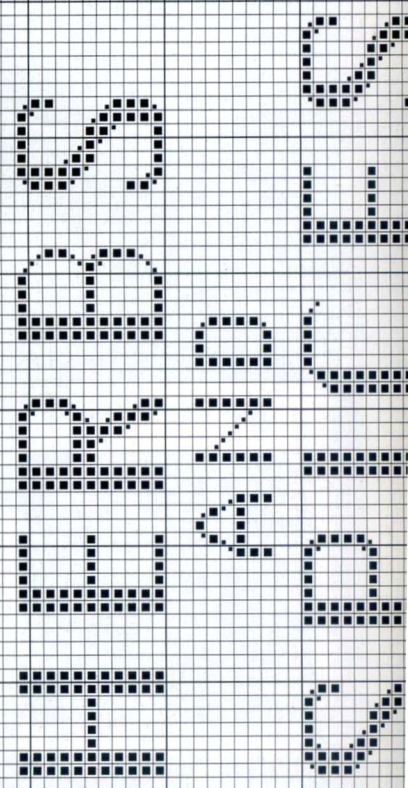
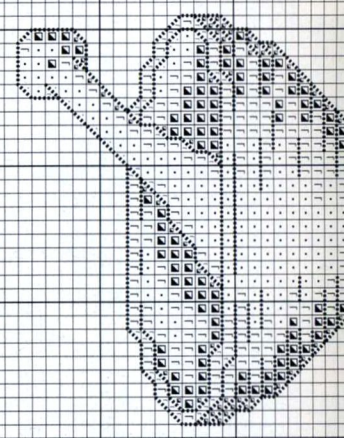


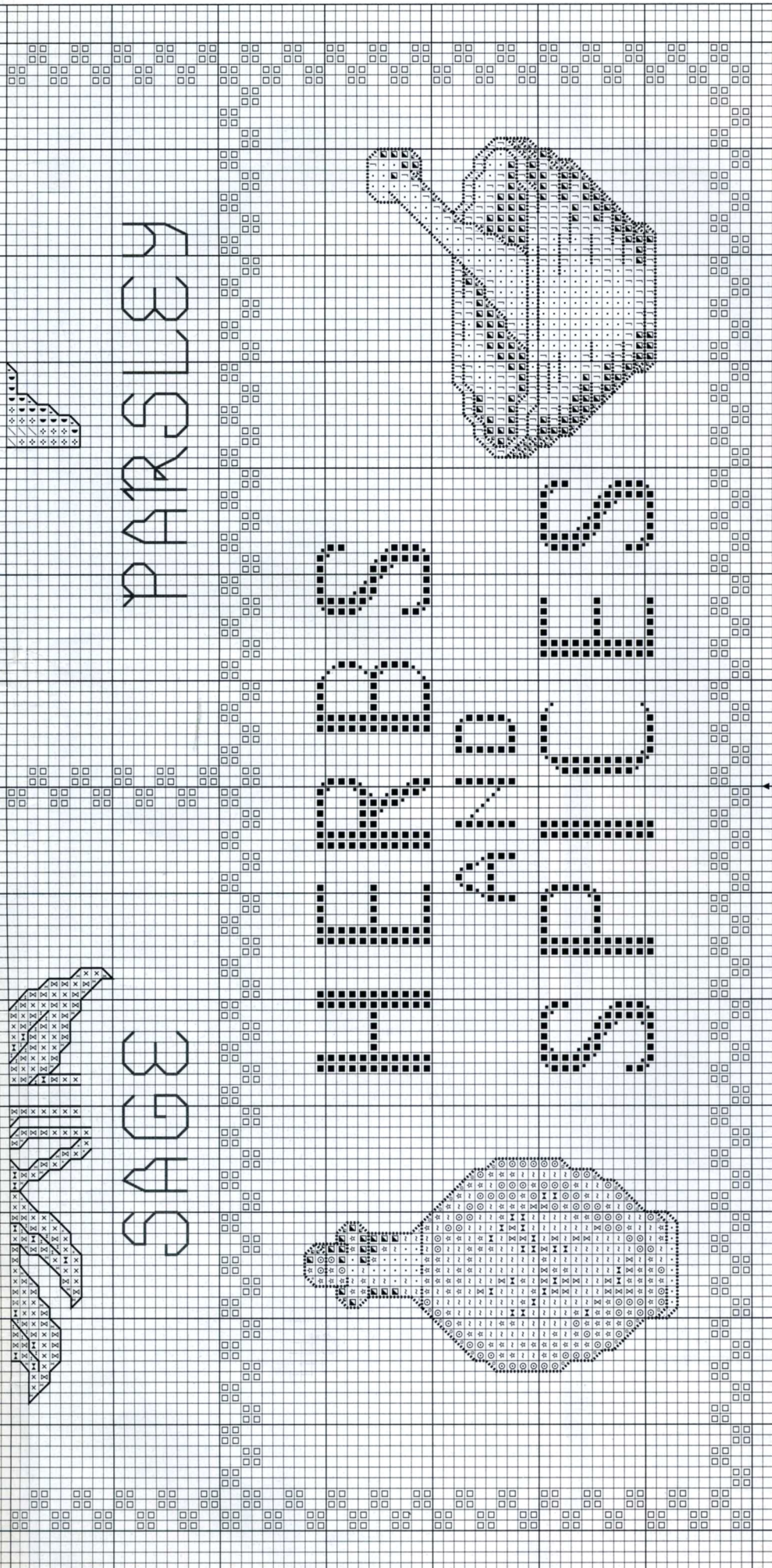


PARSLEY



SAGE

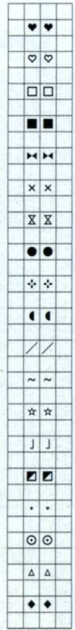




ANCHOR DMC MADEIRA COLOUR

Cross stitch in two strands

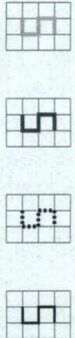
092	3607	2714
095	3609	0710
130	3755	0909
137	798	0905
211	561	1312
213	369	1309
215	368	1310
245	986	1404
254	907	1414
256	906	1410
259	3348	1604
292	3078	0102
305	743	0113
368	437	2011
370	433	2303
926	Ecrú	Ecrú
1001	976	2302
1021	224	0502
1027	223	0812



- Dark pink
- Light pink
- Light blue
- Dark blue
- Dark blue green
- Light blue green
- Medium blue green
- Dark green
- Light green
- Medium green
- Very light green
- Light yellow
- Dark yellow
- Light beige
- Dark brown
- Ecrú
- Copper
- Light salmon
- Dark salmon

Backstitch in one strand

043	815	0513
137	798	0905
381	938	2003
683	500	1314



- Dark red flowers
- Dark blue lettering
- Dark brown bottle, pestle and mortar
- Very dark green all other outlines and details

Our model was stitched using Anchor threads on 28HPI evenweave fabric. **Stitch count** 190 high x 140 wide; **approximate dimensions** 35x25cm (13⁵/₈x10in).



Decorate a box for all herbs and spices