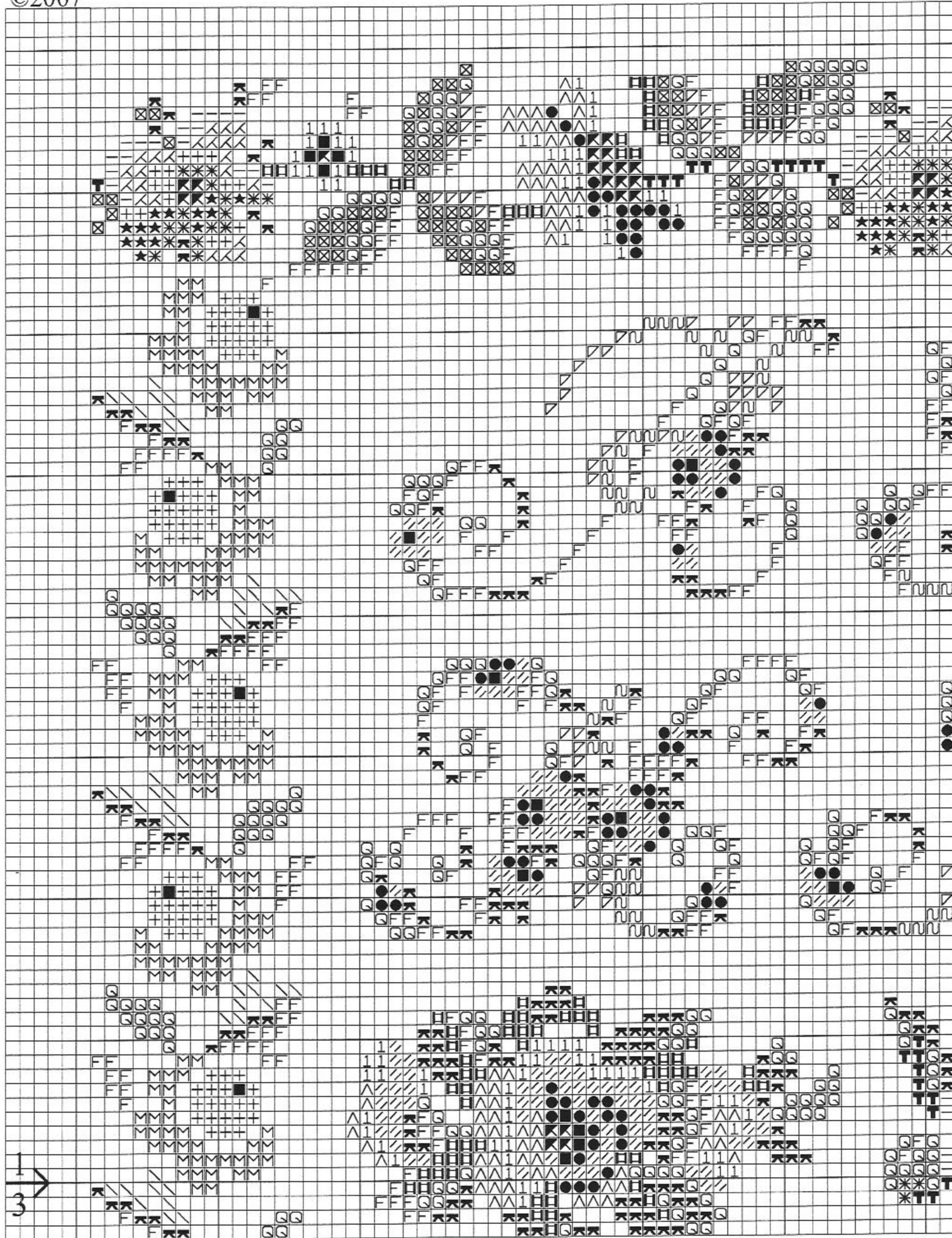
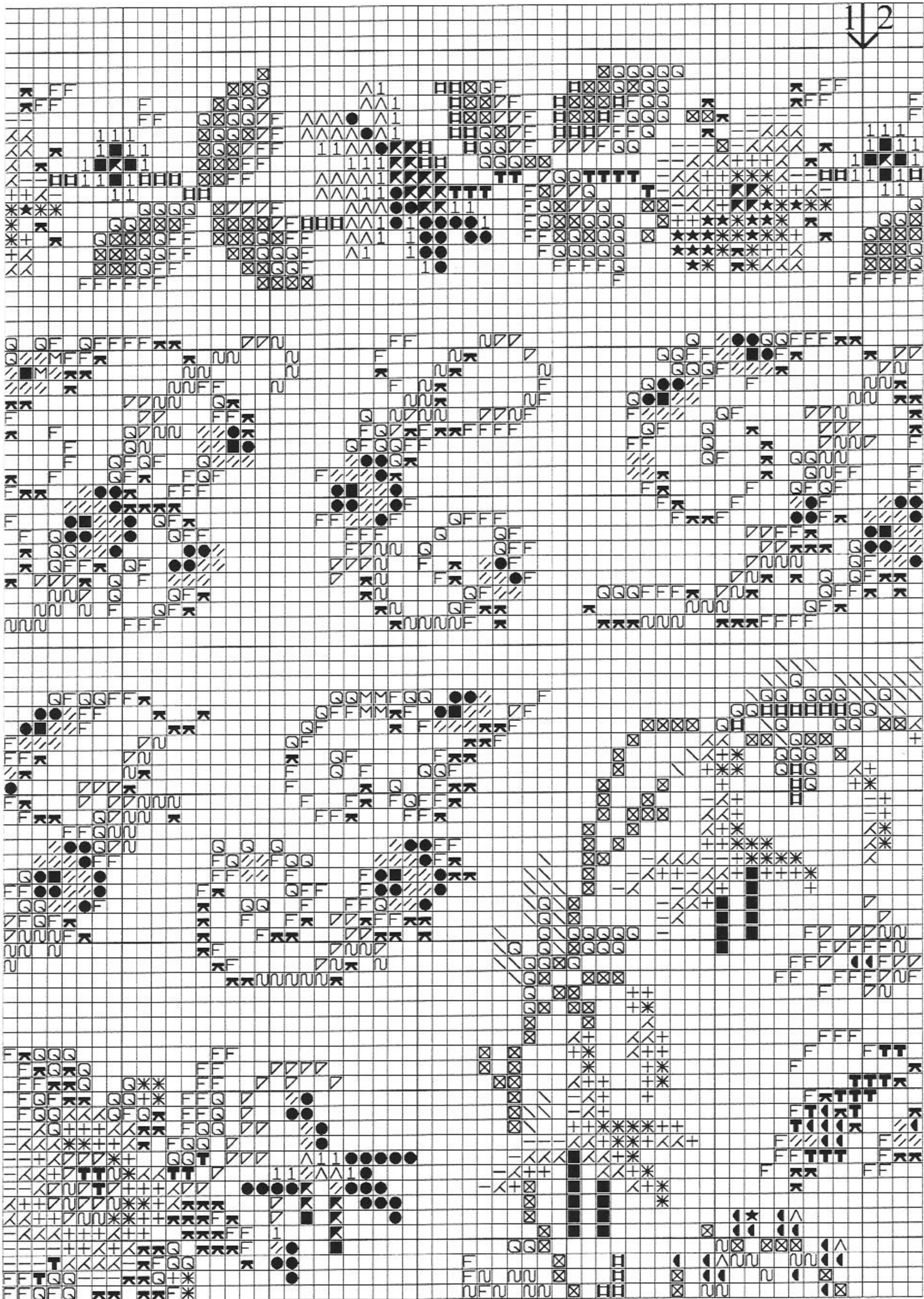
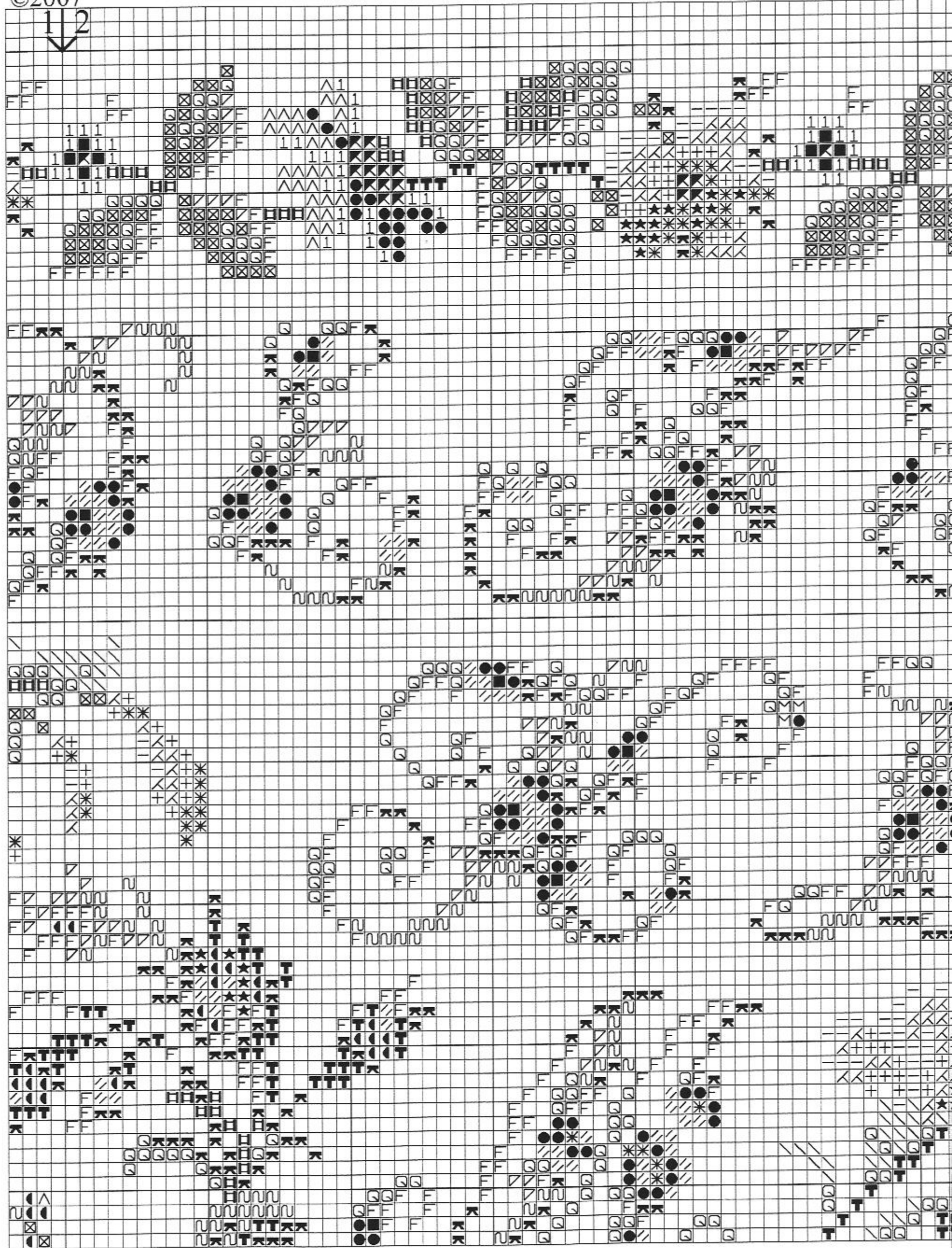
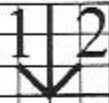


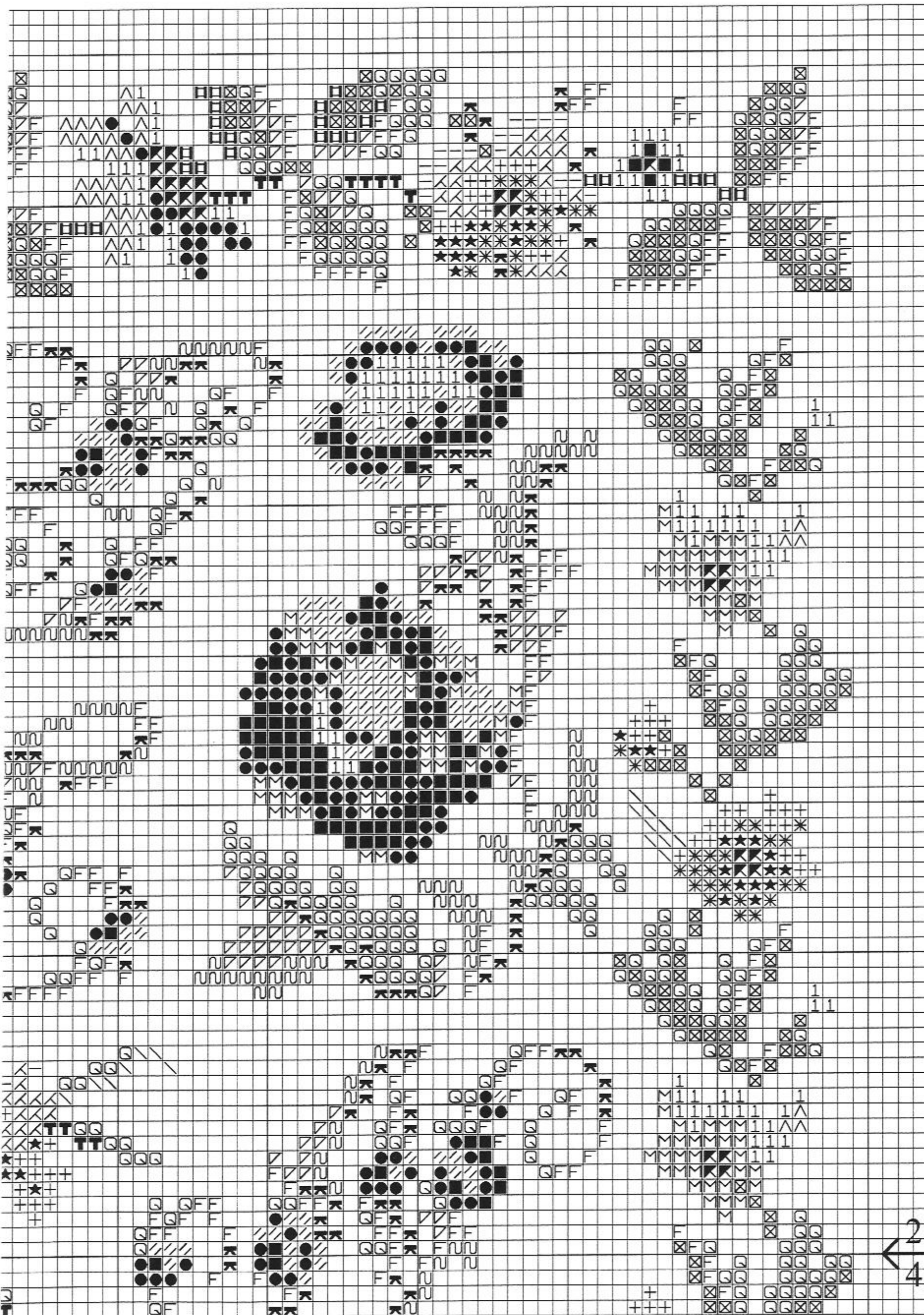
©2007



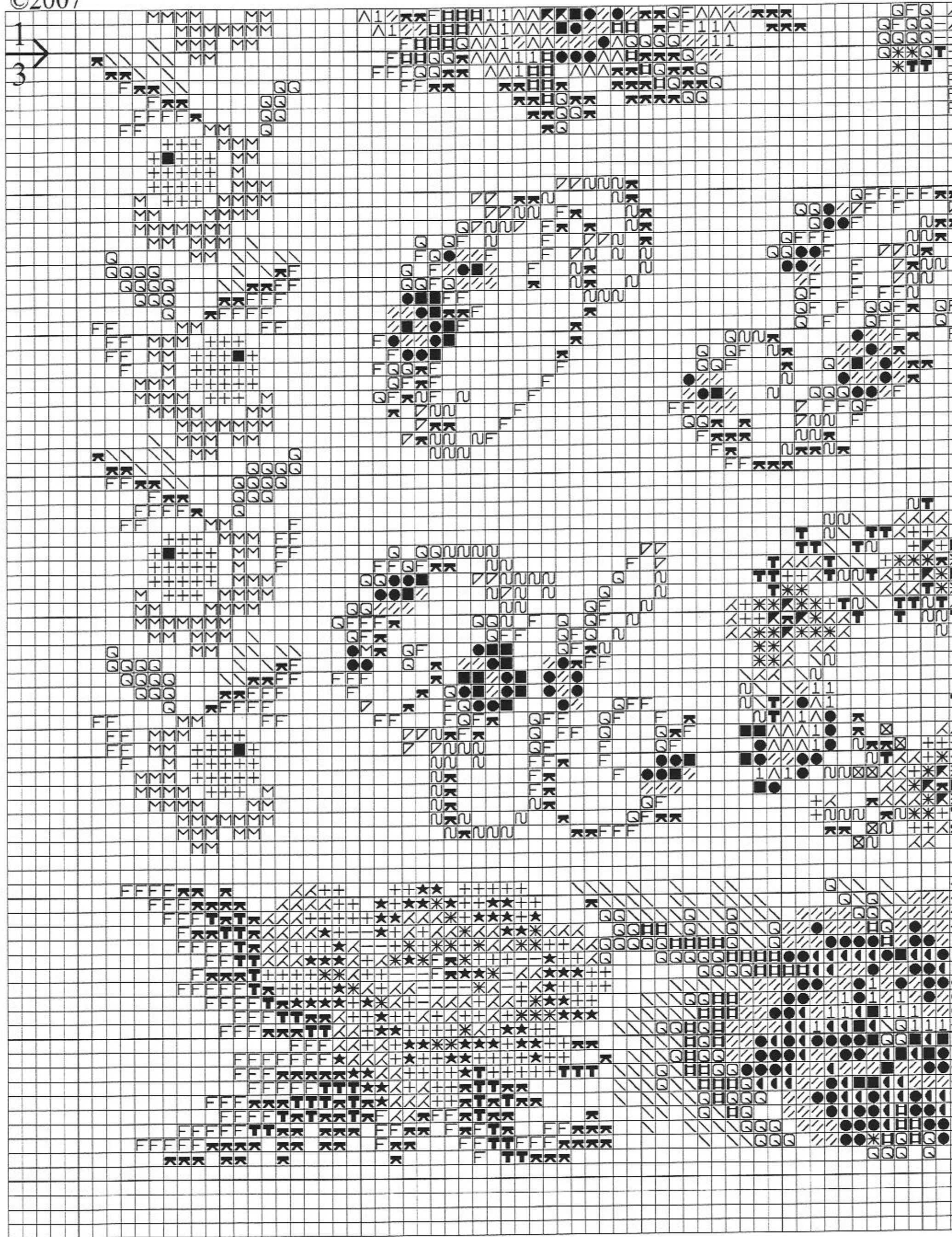


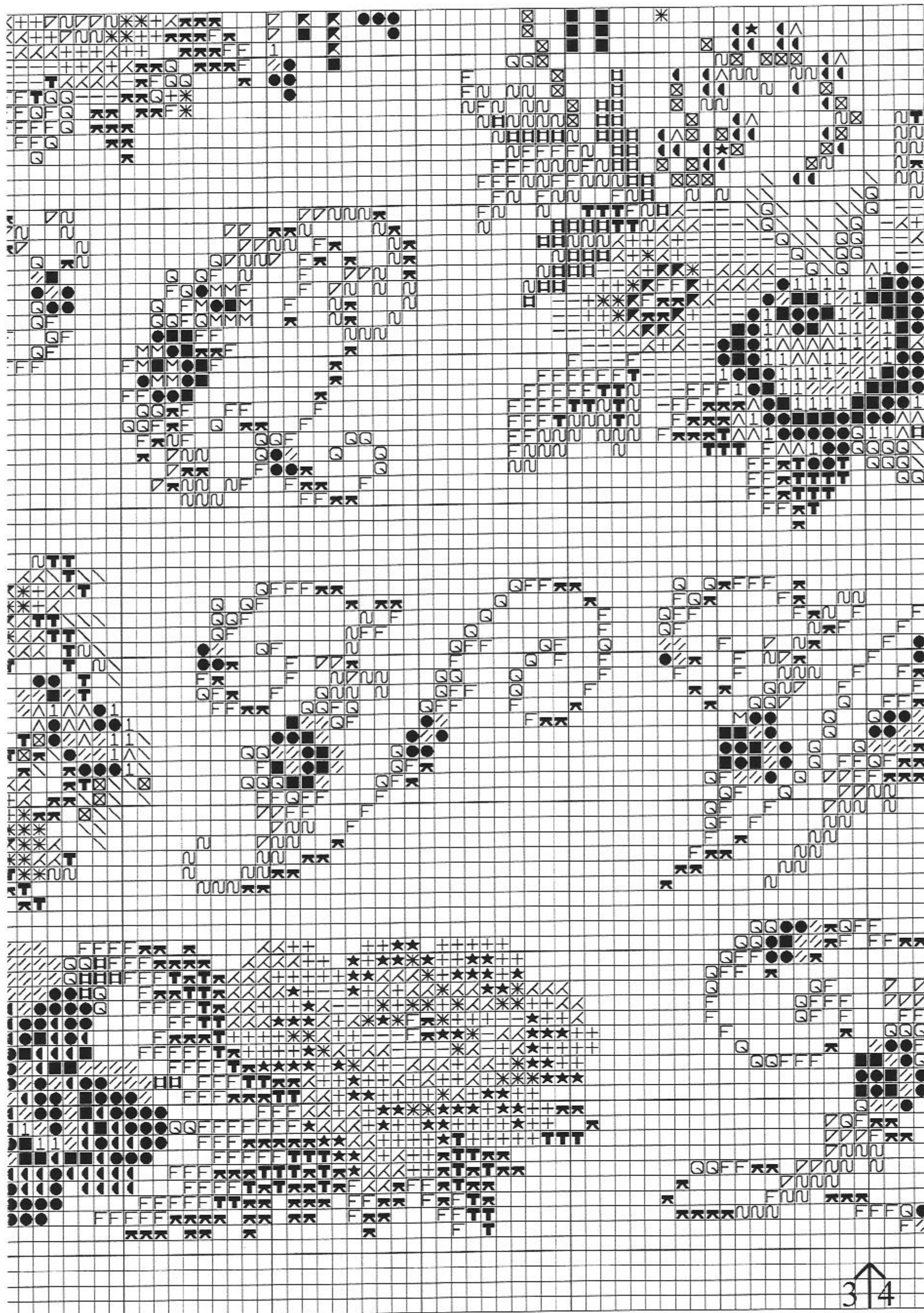
©2007



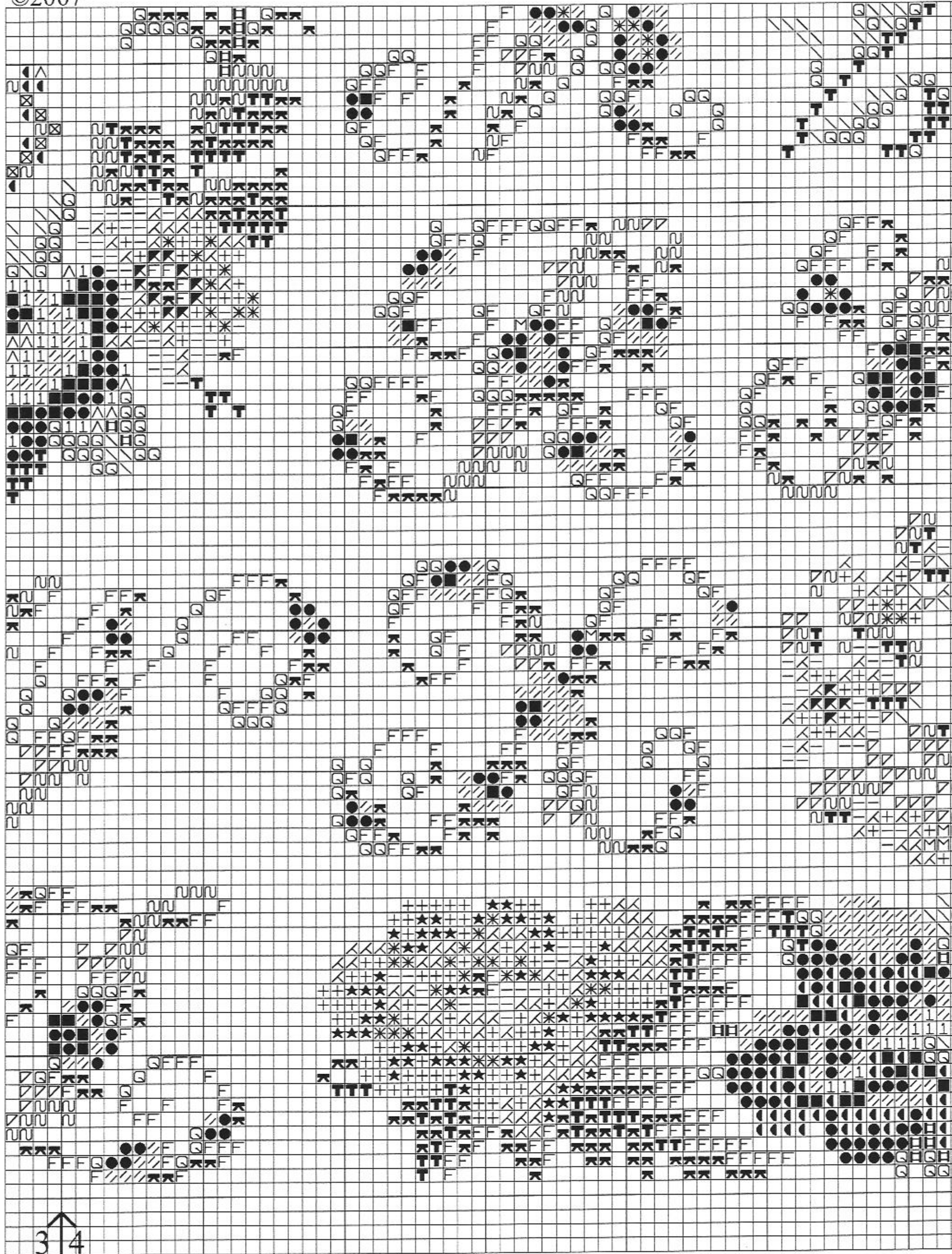


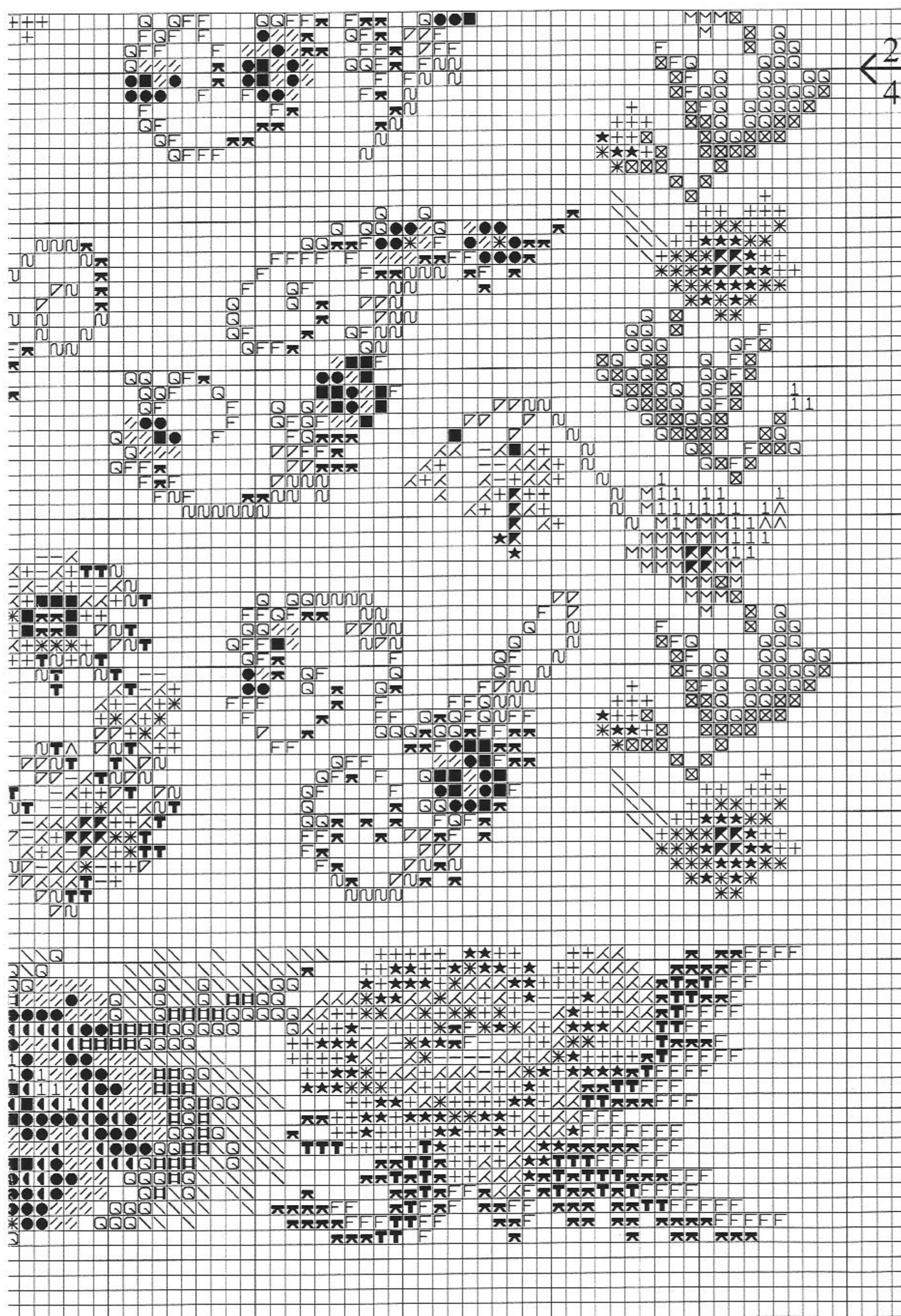
©2007

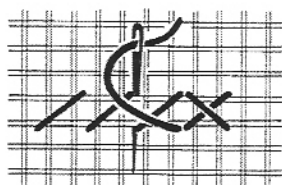




©2007







ART 117

DMC 6 Strand Embroidery Floss

Mouliné Spécial DMC

Cross Stitch - Point de Croix
 Use 2 strands - Utiliser 2 brins

1		369	12		347
2		472	13		3340
3		733	14		3801
4		581	15		321
5		469	16		815
6		936	17		352
7		3347	18		351
8		3362	19		350
9		895	20		817
10		3371	21		498
11		221	22		814

©2007

