

INDIE BEACH COVER

Created by Silvia Grazioli
Size: M

Material

2 balls of Anne-color 8176/3334/7311/2676/1198 and 4514.

Crochet hook D3/3.25 mm

Crochet stitch glossary and abbreviations:

stitch: st, stitches: sts; repeat: rep
chain: ch, slip stitch: sl st, single crochet (sc),
double crochet (dc), treble crochet (tr)

Pattern 1 - Chart

Pattern 2 - Chart

Crochet edge - Chart

Gauge: 40 sts x 10 R over Pattern using crochet hook D3.

Front & back - They are worked together. Start at neckline. Ch 290, follow Pattern 1 back & forth, repeat from * to * (10x). Follow color order: 1 row in yellow, 2 rows in salmon, 2 rows in pink, 22 rows in off white, 4 rows in yellow, 1 row in brown, 3 rows in salmon, 1 row in brown, 1 row in pink, 1 row in brown, 1 row in light green, 1 row in brown.

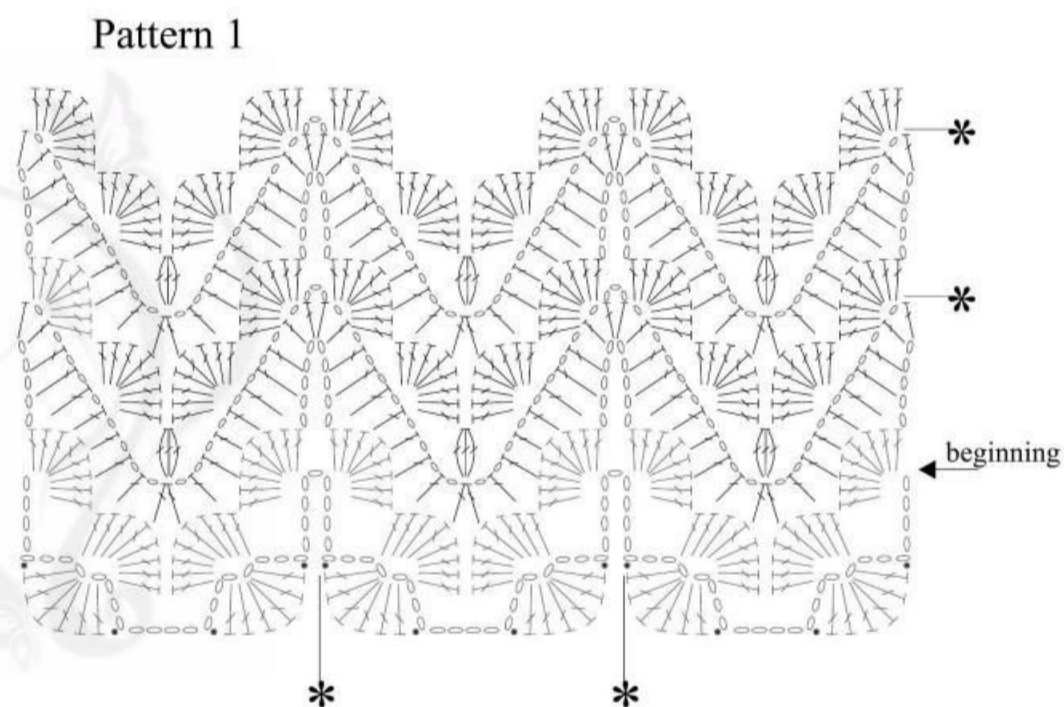
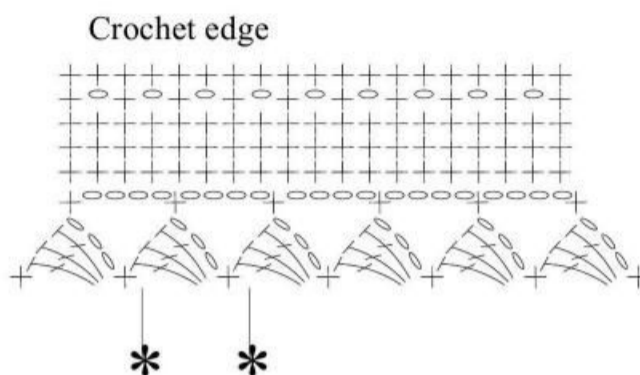
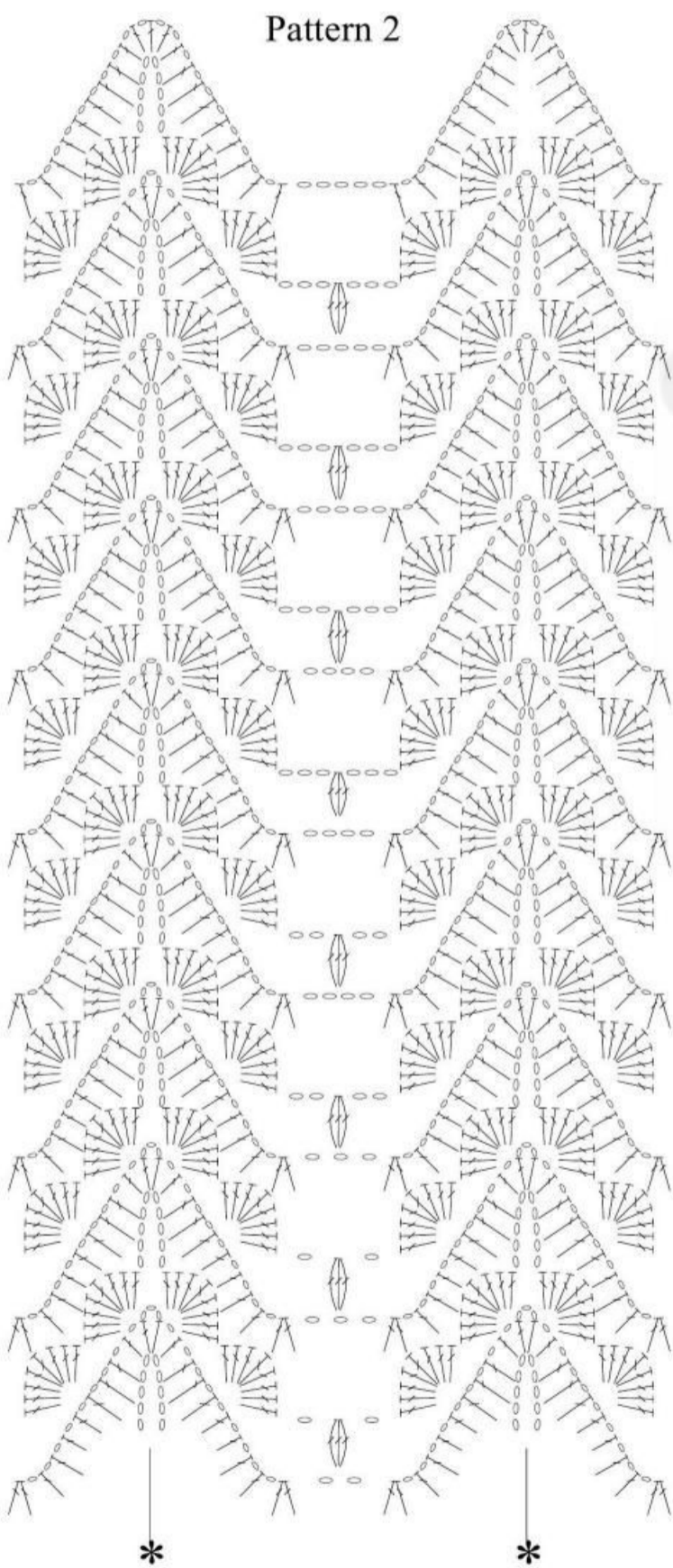
In the 1st row using off white inc 1 motif: Ch 29 and follow chart from * to * (11 x from * to * in the entire row). Work in the round, follow Pattern 1. In the 4th row using off white divide work to form sleeves: 2x from * to *, following st direction on each side of front neckline center = 4x from * to *, ch 58, skip 2x from * to form sleeves.

Back: 3x from * to *, 58 sts, skip 2x from * to *. Close and crochet in the round, follow Pattern 1. In the 18th row using off white, follow Pattern 2. After finishing Pattern 2 chart, use brown and make a sc row around it.

Finishing: Crochet edge along neckline. Row 2: crochet in the round around front neckline and on the back work in sc. Follow color order: 4 rows in yellow, 1 row in brown, 1 row in light green, 1 row in brown. Try to make front neckline edges round. Use brown and make a 60" cord with 4 strands. Make a knot at the edges. Cross cord like shoelaces for 4" from the beginning of neckline. Make 2 tassels with 20 2.5" strands in different colors and sew them as shown in the picture. Make a sc row around sleeves. Use off white to make 20 tassels as the ones above and tie them on sleeves edges in regular spaces.



INDIE BEACH COVER



Stitch key

- = ch
- + = sc
- ⌈ = dc
- ⌈ = 3 dc cluster

Repeat from * to *