

CANDY NATURAL COTTON TOP

Created by Milla Vieira
Size 6/8



Material:

1 ball of Natural cotton - color 2012
Knitting needles 10/6 mm
Crochet hook G6/ 4 mm

Crochet stitch glossary and abbreviations:

stitch: st, stitches: sts; repeat: rep
chain: ch, slip st (sl st): Insert hook, yarn over and draw yarn through chain in one motion.

single crochet (sc): Follow the same instruction to make slip stitch until you draw yarn through the chain stitch and up onto the hook. Yarn over and draw it through both loops.

Picot: follow chart.

Knitting stitch glossary:

Stockinette st: knit RS rows, purl WS rows.
Pattern 1: follow chart.

Gauge: 15 sts x 20 R = 4"/10 cm over Pattern 1 using needles 10.

Back: Cast on 55 sts and follow Pattern 1 - chart for 20" and bind off.

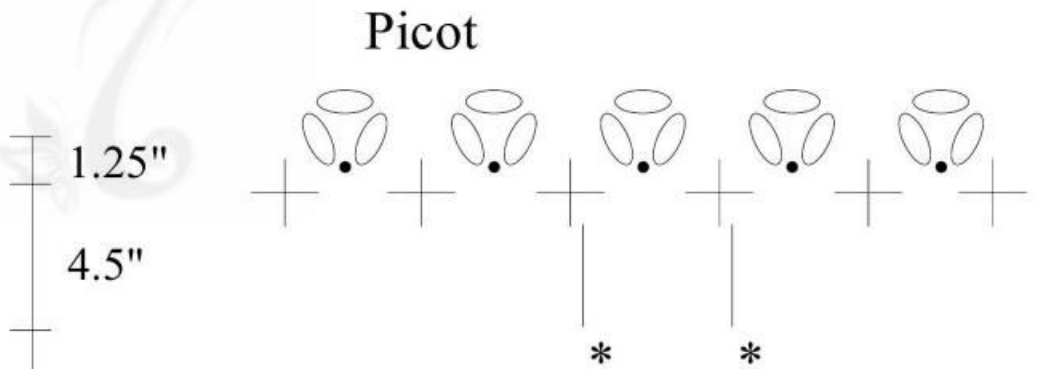
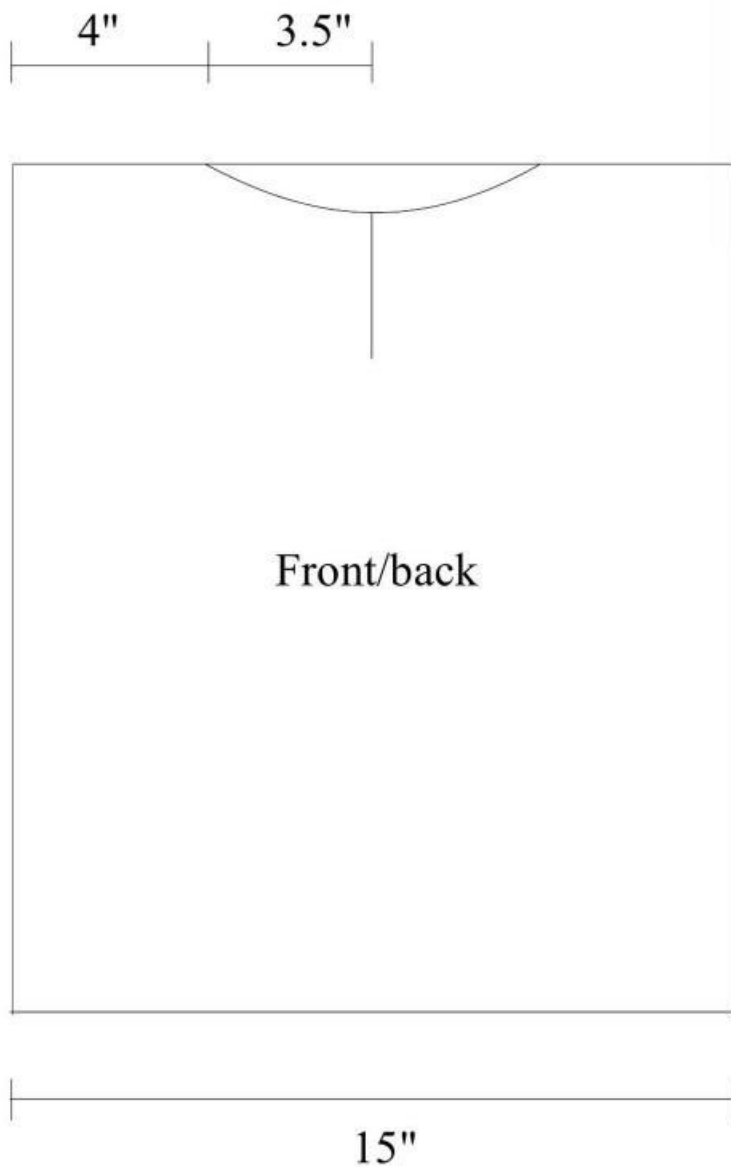
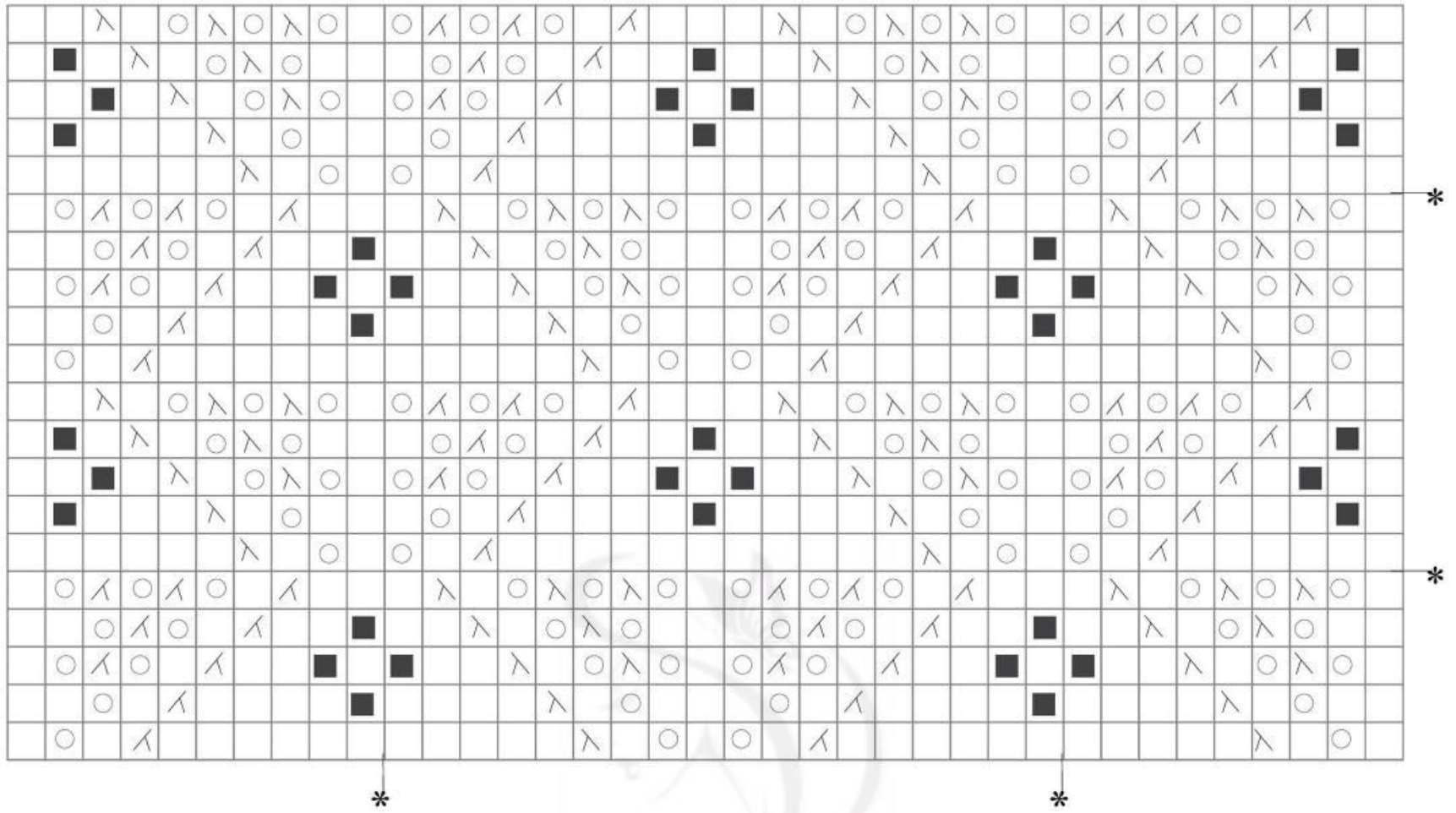
Front: work same as back up to 14.25". Divide work in two equal parts and work separately. When piece measures 19", start neckline dec: dec every 2 rows: 6 sts (2x). When piece measures 20" bind off.

Assembly and finishing: Sew shoulders and sides, leaving a 5.75" opening for armholes. Follow picot chart and work around armholes, neckline and bottom. Use double yarn and chain for 10", fasten off and sew one cord in each side of neckline as shown in the picture.



CANDY NATURAL COTTON TOP

Pattern 1



Stitch key

- = k
- = p
- = yo
- λ = k2tog
- λ = SKP (slip 1, knit 1, pass slip st over)
- = Bobble st in p, 3 sts (k1,p1,k1) turn, p3tog.
- WS = p
- = ch
- = sl st
- + = sc

Rep from * to *