

## PINEAPPLE YOKE TOP

Created by Circulo studio  
Size M

### Material:

2 balls of Anne Bright - color 8001  
Crochet hook 0/1.75mm  
Paper, pencil and scissors.

### Crochet stitch glossary and abbreviations:

stitch: st, stitches: sts; repeat: rep

chain: ch, slip stitch: sl st, single crochet (sc),  
double crochet (dc)

picot: ch 3 , insert hook into 1st ch, pull  
through.

**Gauge:** 7 " ch arches x 12R = 4"/10 cm  
over Pattern 2 using hook 0.

Transfer measurement chart to paper to  
guide along work. Arrows indicate direction.

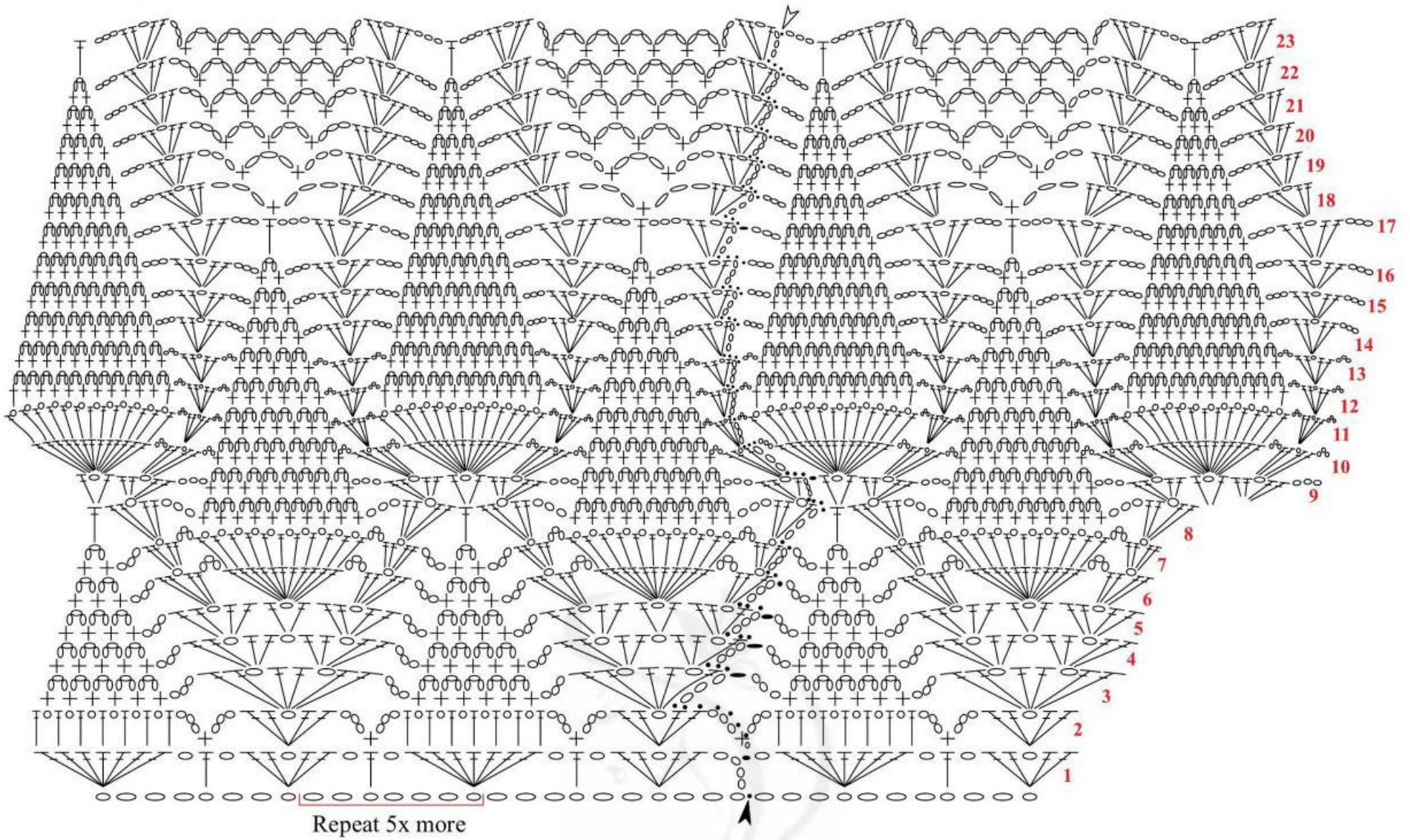
**Top:** Use crochet hook 0/1.75 mm and Anne  
Bright 8001 and start at yoke. Ch 71, 1 sl st  
to close. Rows 2 - 23, follow Pattern 1 and  
rep sts. Crochet in the round and close every  
row with 1 sl st. After finishing yoke, join  
back & front with a chain (8.25") on both  
sides to form arms. Now follow Pattern 2,  
rep sts for 11". To finalize, make a crochet  
edge row - follow Pattern 3 + rep sts. Work  
also around sleeves and follow Pattern 4  
around neckline.





# PINEAPPLE YOKE TOP

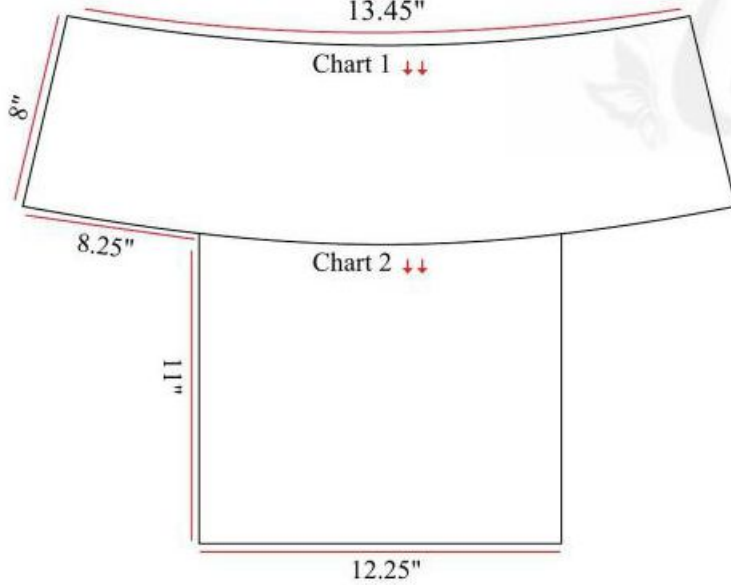
## Pattern 1 - Yoke



Repeat 5x more

### Measurement chart

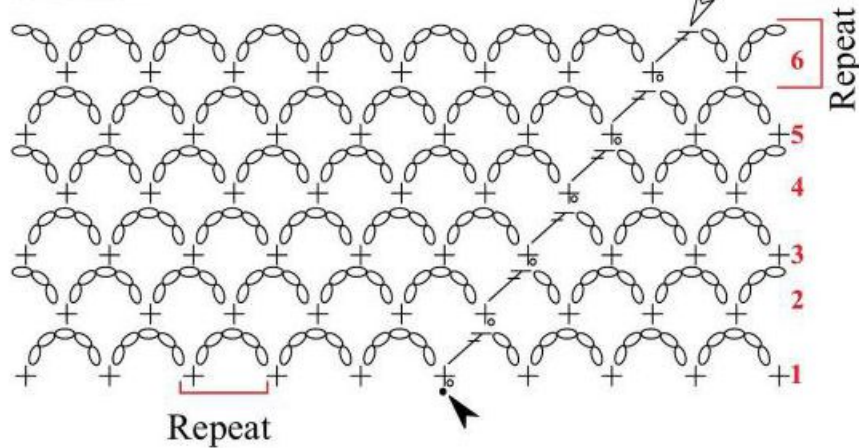
Front = back  
13.45"



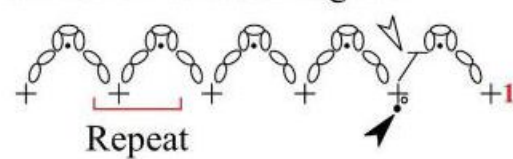
### Stitch key

- ch
- sl st
- + sc
- ┆ dc
- picot
- ▲ beginning
- △ end
- ↔ direction

## Pattern 2



## Pattern 3 - Crochet edge A



## Pattern 4 - Crochet edge B

