

repeat from * across to last ch-sp, sc in last ch-sp, dc in 2nd ch of turning ch.

Row 9 Ch 3, turn; **dc in first ch-1 sp, *BPdc around next 4 dc, ch 1, sk next dc, sc in next ch-1 sp, ch 4, sc in next ch-4 sp, ch 1, dc in next ch-1 sp; repeat from * across to last 4 dc, BPdc around next 3 dc, dc in last dc.

Row 10 Ch 2, turn; **FPdc around next 4 dc, *dc in next ch-1 sp, ch 1, sc in next ch-4 sp, ch 4, sc in next ch-1 sp, ch 1, sk next dc, FPdc around next 4 dc; repeat from * across to last ch-sp, dc in last ch-sp, dc in 2nd ch of turning ch.

Repeat Rows 1–10 for Diagonal Lace Pattern.

SIZES

S (M/L, 1X, 2X/3X)

FINISHED MEASUREMENTS

chest 38 (44, 50, 56)*96.5 (112, 127, 142)cm

length 22 (23, 23½, 24½)*56 (58.5, 59.5, 62)cm

GAUGE

13 sts and 9½ rows = 4"/10cm over Diagonal Lace Pattern

Remember to check gauge for best results!

HOW TO MAKE A GAUGE SWATCH

Ch 18.

Row 1 (set-up row) Dc in 3rd ch from hook (beginning ch counts as first dc), dc in next 4 ch, *ch 1, sk next ch, sc in next ch, ch 4, sk next ch, sc in next ch, ch 1, sk next ch, dc in last 6 ch—17 sts (consisting of 12 dc, 2 sc, 2 ch-1 sps, and 1 ch-4 sp. note Each ch-sp counts as one st only).

Rows 2–10 Work Rows 1–9 of Diagonal Lace Pattern.

Resulting gauge swatch should measure approx 5¼ x 4¼"/13.5 x 11cm. If necessary, adjust hook size to obtain correct gauge.

NOTE

Each ch-space counts as one stitch only, unless otherwise noted. This is particularly important when counting stitches and working increases or decreases. Turning chains count as the number of stitches indicated (e.g., a ch-2 turning chain counts as one double crochet).

BACK

Ch 58 (68, 78, 88).

Row 1 (set-up row) Dc in 3rd ch from hook (beginning ch counts as first dc), dc in next 4 ch, *ch 1, sk next ch, sc in next ch, ch 4, sk next ch, sc in next ch, ch 1, sk next ch, dc in next 5 ch; repeat from * across, dc in last ch—57 (67, 77, 87) sts (counting each ch-sp as one st only).

Rows 2–29 Beginning with Row 1 of pattern, work in Diagonal Lace Pattern until piece measures 12"/30.5cm from beginning; end with Row 8 of Diagonal Lace Pattern.

Row 30 (increase row) Ch 2, turn; dc in first dc (increase made), ch 1, beginning at ** work Row 9 of Diagonal Lace Pattern across to last dc, 2 dc in last dc—59 (69, 79, 89) sts.

Row 31 Ch 2, turn; FPdc around next dc, beginning at ** work Row 10 Diagonal Lace Pattern across to last 2 dc, FPdc around next dc, dc in last dc.

Row 32 Ch 2, turn; BPdc around next dc,

beginning at ** work Row 1 of Diagonal Lace Pattern across to last 2 dc, BPdc around next dc, dc in last dc.

Row 33 Ch 2, turn; FPdc around next dc, beginning at ** work Row 2 Diagonal Lace Pattern across to last 2 dc, FPdc around next dc, dc in last dc.

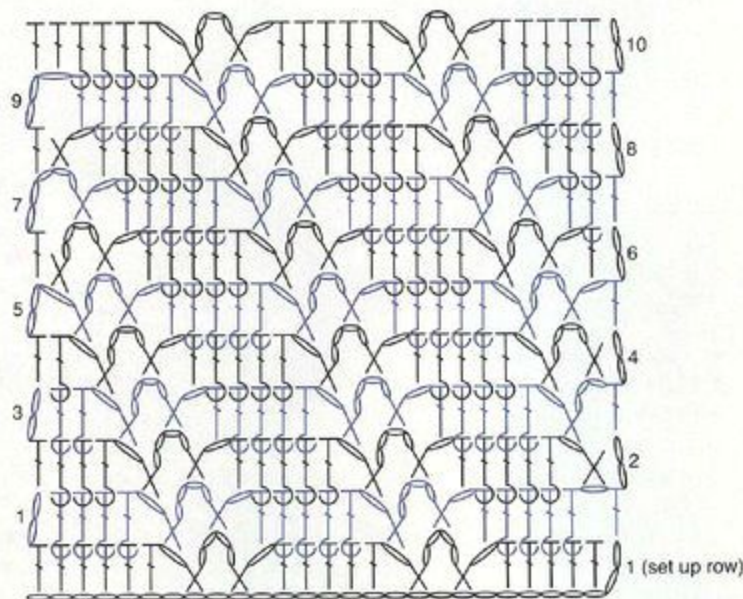
Row 34 Ch 2, turn; BPdc around next dc, beginning at ** work Row 3 of Diagonal Lace Pattern across to last 2 dc, BPdc around next dc, dc in last dc.

Row 35 (increase row) Ch 2, turn; dc in first dc (increase made), FPdc around next dc, beginning at ** work Row 4 of Diagonal Lace Pattern across to last 2 dc, FPdc around next dc, 2 dc in last dc—61 (71, 81, 91) sts.

Shape Armholes

Row 36 Ch 1, turn; sl st in first 4 dc, work Row 7 of Diagonal Lace Pattern across to last 5 sts, ch 3, dc in last ch-4 sp; leave remaining 4 sts unworked—53 (63, 73, 83) sts.

DIAGONAL LACE PATTERN STITCH DIAGRAM



Sizes M/L (1X, 2X/3X) Only

Row 37 (decrease row) Ch 2, turn; sk first ch-sp, beginning at ** work Row 2 of Diagonal Lace Pattern across to last 4 sts, dc2tog over next ch-1 sp and next sc, sk next ch-sp, dc in 2nd ch of turning ch—59 (69, 79) sts.

Sizes 1X (2X/3X) Only

Row 38 (decrease row) Ch 2, turn; sk next dc, dc2tog over next 2 dc, BPdc around next dc, *ch 1, sk next dc, sc in next ch-1 sp, ch 4, sc in next ch-4 sp, ch 1, dc in next ch-1 sp, BPdc around next 4 sts; repeat from * across to last 4 sts, sk next dc, dc2tog over next ch-1 sp and next sc, dc in last dc—65 (75) sts.

Row 39 (decrease row) Ch 2, turn; sk next dc, dc2tog over next 2 dc, FPdc around next 3 dc, dc in next ch-1 sp, ch 1, sc in next ch-4 sp, ch 4, *sc in next ch-1 sp, ch 1, sk next dc, FPdc around next 4 dc, dc in next ch-1 sp, ch 1, sc in next ch-4 sp, ch 4; repeat from * across to last 4 sts, dc2tog over next ch-1 sp and next dc, sk next dc, dc in last dc—61 (71) sts.

Size 2X/3X Only

Row 40 (decrease row) Ch 2, turn; sk next dc, dc2tog over next ch-4 sp and sc, dc in next ch-1 sp, *BPdc around next 4 sts, ch 1, sk next dc, sc in next ch-1 sp, ch 4, sc in next ch-4 sp, ch 1, dc in next ch-1 sp; repeat from * to last 6 sts, BPdc around next 2 sts, dc2tog over next 2 dc, sk next dc, dc in last dc—67 sts.

Row 41 (decrease row) Ch 2, turn; sk next dc, dc2tog over next 2 dc, FPdc around next dc, dc in next ch-1 sp, ch 1, sc in next ch-4 sp, ch 4, sc in next ch-1 sp, ch 1, sk next dc, *FPdc around next 4 dc, dc in next ch-1 sp, ch 1, sc in next ch-4 sp, ch 4, sc in next ch-1 sp, ch 1, sk next dc; repeat from * across to last 6 sts, FPdc around next 2 sts, dc2tog over next 2 dc, sk next dc, dc in last dc—63 sts.

All Sizes

Row 37 (38, 40, 42) Work Row 4 (1, 7, 3) of Diagonal Lace Pattern across, end row as in Row 8 (3, 1, 9) of pattern.

Row 38 (39, 41, 43) Work Row 9 (4, 2, 10)

of Diagonal Lace Pattern across, end row as in Row 5 (2, 8, 4) of pattern.

Continue in Diagonal Lace Pattern as established, with no increases or decreases, until armhole measures 7 (8, 8½, 9½)"/18 (20.5, 21.5, 24)cm. Fasten off.

FRONT

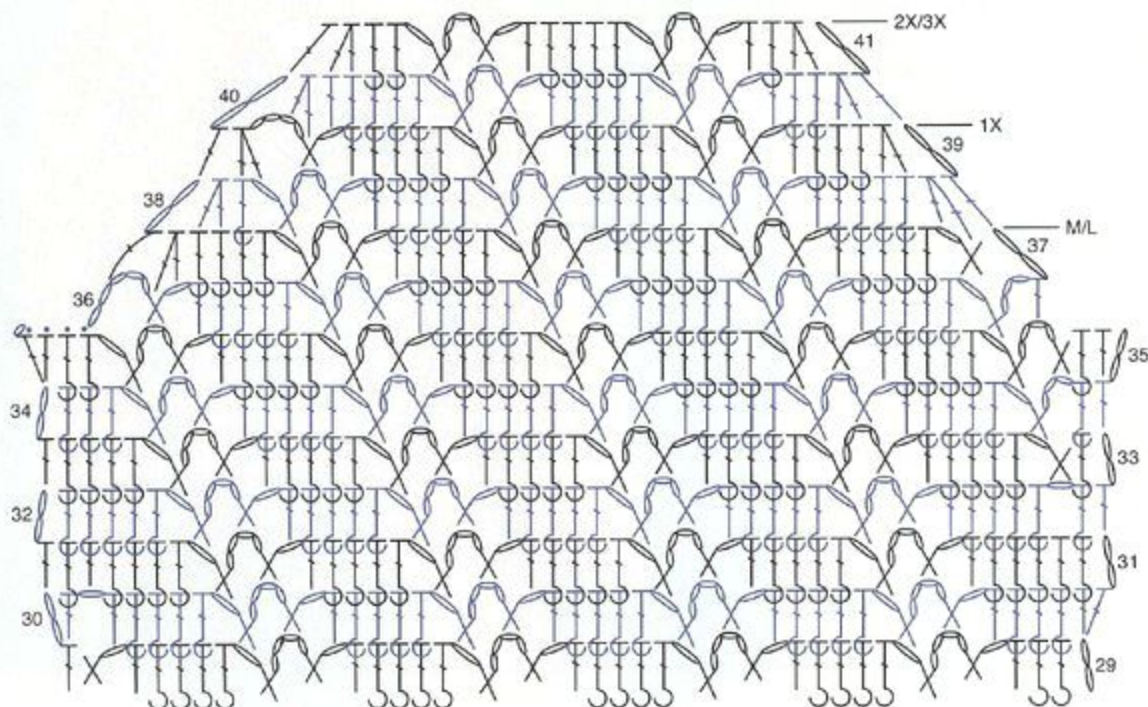
Work same as back until 45 (46, 46, 47) rows have been worked. The armhole should measure approx 4 (4½, 4½, 5)"/10 (11.5, 11.5, 12.5) cm, and the last row worked should begin as in Row 2 (9, 3, 4) and end as in Row 6 (1, 7, 7) of Diagonal Lace Pattern.

Shape First Shoulder and Neck

Place a marker in st on each side of center 17 (19, 21, 23) sts.

Row 46 (47, 47, 48) Work Row 7 (2, 8, 8) of Diagonal Lace Pattern across to marked st, dc in marked st—18 (20, 20, 20) sts.

Row 47 (48, 48, 49) (decrease row) Ch 1, turn; sl st in first 3 sts, ch 2 (counts as dc),

INCREASE AND DECREASE STITCH PATTERN FOR BACK ROWS 29-41

beginning at ** work Row 6 (3, 9, 9) of Diagonal Lace Pattern, end as in Row 8 (3, 9, 9) of pattern—15 (17, 17, 17) sts.

Row 48 (49, 49, 50) (decrease row) Work Row 9 (4, 10, 10) of Diagonal Lace Pattern across to last 3 sts, dc in next dc; leave remaining 2 sts unworked—13 (15, 15, 15) sts.

Row 49 (50, 50, 51) Work Row 6 (7, 3, 3) of Diagonal Lace Pattern across, end row as in Row 10 (5, 1, 1).

Continue in Diagonal Lace Pattern as established, with no increases or decreases, until armhole measures the same as back armhole. Fasten off.

Shape Second Shoulder and Neck

Join yarn with sl st in next marked st.

Next Row Ch 2, continue in Diagonal Lace Pattern as established across—18 (20, 20, 20) sts.

Next Row Ch 2, turn; continue in Diagonal Lace Pattern as established across to last 4 sts, dc in next st; leave remaining 3 sts unworked—15 (17, 17, 17) sts.

Next Row Ch 1, turn; sl st in first 2 sts, ch 2 (counts as dc), sk next st, continue in Diagonal Lace Pattern as established, work dc in last dc—13 (15, 15, 15) sts.

Continue in Diagonal Lace Pattern as established, with no increases or decreases, until armhole measures the same as back armhole. Fasten off.

SLEEVE (MAKE 2)

Ch 32.

Row 1 (set-up row) Dc in 3rd ch from hook (beginning ch counts as dc) and in next ch, ch 1, sk next ch, sc in next ch, ch 4, sk next ch, sc in next ch, ch 1, sk next ch, *dc in next 5 ch, ch 1, sk next ch, sc in next ch, ch 4, sk next ch, sc in next ch, ch 1, sk next ch; repeat from * across to last 3 ch, dc in last 3 ch—31 sts.

Row 2 Ch 2, turn; BPdc around next dc, **ch 1, sk next dc, sc in next ch-1 sp, ch 4, sc in next ch-4 sp, ch 1, dc in next ch-1 sp, *BPdc around next 4 dc, ch 1, sk next dc, sc in next ch-1 sp, ch 4, sc in next ch-4 sp, ch 1, dc in next ch-1 sp; repeat from * across to last 3 dc, BPdc around next 2 dc, dc in last dc.

Row 3 (increase row) Ch 2, turn; dc in first

dc (increase made), **FPdc around each dc to first ch-1 sp, dc in next ch-1 sp, ch 1, sc in next ch-4 sp, ch 4, sc in next ch-1 sp, ch 1, sk next dc, *FPdc around next 4 dc, dc in next ch-1 sp, ch 1, sc in next ch-4 sp, ch 4, sc in next ch-1 sp, ch 1, sk next dc; repeat from * across to last group of dc, end with FPdc around each dc to last, 2 dc in last dc—33 sts.

Row 4 Ch 2, turn; BPdc around each dc across to 1 dc before first ch-1 sp, beginning at ** repeat Row 2 across, ending with BPdc around each dc to last dc, dc in last dc.

Sizes S Only

Row 5 Ch 2, turn; beginning at ** repeat Row 3 across.

Row 6 Repeat Row 4.

All Sizes

Repeat last 4 (2, 2, 2) rows 6 (9, 11, 14) more time(s)—45 (51, 55, 61) sts.

Note Work increased stitches into Diagonal Lace Pattern if desired.

Continue in Diagonal Lace Pattern as established, working no increases, until sleeve measures 17"/43cm from the beginning.

